

# chirps: API Client for the CHIRPS Precipitation Data in R

Kauê de Sousa<sup>1, 2</sup>, Adam H. Sparks<sup>3</sup>, William Ashmall<sup>4</sup>, Jacob van Etten<sup>2</sup>, and Svein Ø. Solberg<sup>1</sup>

<sup>1</sup> Department of Agricultural Sciences, Inland Norway University of Applied Sciences, Hamar, Norway <sup>2</sup> Bioversity International, Rome, Italy <sup>3</sup> Centre for Crop Health, University of Southern Queensland, Toowoomba, Australia <sup>4</sup> Universities Space Research Association, National Aeronautics and Space Administration (NASA), Huntsville, USA

DOI:

Software

- [Review](#) ↗
- [Repository](#) ↗
- [Archive](#) ↗

Submitted:

Published:

License

Authors of papers retain copyright and release the work under a Creative Commons Attribution 4.0 International License ([CC-BY](#)).

## Summary

The *chirps* package provides functionalities for reproducible analysis in R (R Core Team 2020) using the CHIRPS (Funk et al. 2015) data. CHIRPS is daily precipitation data set developed by the Climate Hazards Group (Funk et al. 2015) for high resolution precipitation gridded data. Spanning 50° S to 50° N (and all longitudes) and ranging from 1981 to near-present (normally with a 45 day lag), CHIRPS incorporates 0.05 arc-degree resolution satellite imagery, and in-situ station data to create gridded precipitation time series for trend analysis and seasonal drought monitoring (Funk et al. 2015). Additionally, the package provides the API client for the IMERG (Huffman et al. 2014) and ESI (SERVIR Global 2019b) data. The Integrated Multi-satellite Retrievals for GPM (IMERG) data provides near-real time global observations of rainfall at 0.5 arc-degree resolution, which can be used to estimate total rainfall accumulation from storm systems and quantify the intensity of rainfall and flood impacts from tropical cyclones and other storm systems. IMERG is a daily precipitation dataset available from 2015 to near-present. The evaporative stress index (ESI) data describes temporal anomalies in evapotranspiration produced weekly at 0.25 arc-degree resolution for the entire globe (Anderson et al. 2011). The ESI data is based on satellite observations of land surface temperature, which are used to estimate water loss due to evapotranspiration (the sum of evaporation and plant transpiration from the Earth's land and ocean surface to the atmosphere). The ESI data is available from 2001 to near-present. When using these data sets in publications please cite Funk et al. (2015) for CHIRPS, Huffman et al. (2014) for IMERG and SERVIR Global (2019b) for ESI.

## Implementation

Four main functions are provided, `get_chirps()`, `get_imerg()`, `get_esi()` and `precip_indices()`. The `get_chirps()` function provides access to CHIRPS data via the ClimateSERV API Client (SERVIR Global 2019a) with methods to handle objects of class 'data.frame', 'geojson' and 'sf' via the package *methods* (R Core Team 2020). To accept the query, ClimateSERV requires a geojson object of type 'Polygon' (one single polygon per request). Using the package *sf* (Pebesma 2018) internally, the input provided in `get_chirps()` is transformed into a list of polygons with a small buffer area (0.0001 arc-sec by default) around the point and transformed into a list of geojson strings. *chirps* uses *crul* (Chamberlain 2019) to interface with ClimateSERV API. The query returns a JSON object parsed to *jsonlite* (Ooms 2014) to obtain the data frame for the time series required. `get_chirps()` returns a data.frame, which also inherits the classes 'chirps' and 'chirps\_df', where each id represents the index for the rows in the in-putted

‘object’. The function `get_imerg()` returns the precipitation data from the IMERG data set. The function works with the same parameters described for `get_chirps()` and also inherits the classes ‘chirps’ and ‘chirps\_df’. The function `get_esi()` returns the evaporative stress index (ESI) data (Anderson et al. 2011), and works similarly to `get_chirps()` returning a data.frame which inherit the class ‘chirps\_df’. Users providing objects of class ‘sf’ and ‘geojson’ in `get_chirps()`, `get_imerg()` and `get_esi()` can also choose to return an object with the same class as the object provided using the arguments ‘as.sf = TRUE’ or ‘as.geojson = TRUE’. With the function `precip_indices()` users can assess how the precipitation changes across the requested time series using precipitation variability indices (Aguilar et al. 2005), computed using *stats* (R Core Team 2020), the main input is an object of class ‘chirps’. Extended documentation is provided with examples on how to increase the buffer area and draw quadrants for the geojson polygon using *sf* (Pebesma 2018).

## Application: a case study in the Tapajós National Forest

The *Tapajós* National Forest is a protected area in the Brazilian Amazon. Located within the coordinates  $-55.4^{\circ}$  and  $-54.8^{\circ}$  E and  $-4.1^{\circ}$  and  $-2.7^{\circ}$  S with  $\sim 527,400$  ha of multiple Amazonian ecosystems. We take twenty random points across its area to get the precipitation from Jan-2008 to Dec-2018 using `get_chirps()`. We use an object of class ‘sf’ which is passed to the method `get_chirps.sf()`. Then, we compute the precipitation indices for the time series with intervals of 30 days using `precip_indices()`.

```
library("chirps")
library("sf")

data("tapajos", package = "chirps")
set.seed(1234)
tp <- st_sample(tapajos, 20)
tp <- st_as_sf(tp)

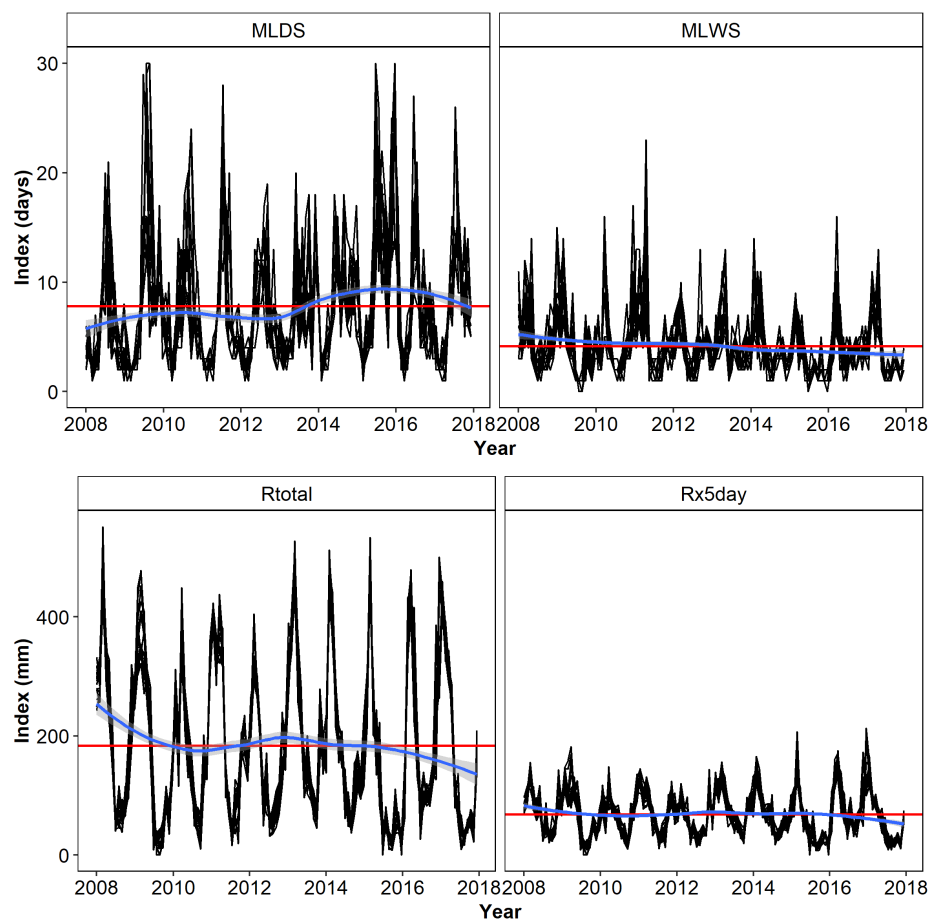
dt <- get_chirps(tp, dates = c("2008-01-01", "2018-01-31"))

p_ind <- precip_indices(dt, timeseries = TRUE, intervals = 30)
```

We selected four indices for the visualization using *tidyverse* (Wickham et al. 2019). Plots were ensembled together using *gridExtra* (Aguirre 2017). Here we see how these indices are changing across the time series (Figure 1). In this quick assessment, we note an increasing extent of consecutive dry days (MLDS) across the time series, with also a decrease in the number of consecutive rainy days (MLWS), which stays above the historical average for MLDS and below the historical average for MLWS. The trends also show a decrease in the total rainfall in the 30-days intervals, staying below the average after 2014. Finally, we note a decrease in maximum consecutive 5-days precipitation, which also stays below the historical average.

## Other applications and conclusion

Deriving precipitation indices that can be obtained from CHIRPS proved to be an excellent approach to evaluate the climate variability using precipitation data (de Sousa et al. 2018) and the effects of climate change on a continental analysis (Aguilar et al. 2005). Additionally, these indices can be used to register specific effects of climate variability on crop varietal performance. In crop modelling, Kehel, Crossa, and Reynolds (2016) applied this to assess the interactions of wheat varieties with the environment, showing how severe drought, assessed with the maximum length of dry spell (MLDS), can affect



**Figure 1:** Trends in precipitation variability across the Tapajós National Forest, Brazil, for the period of 01-Jan-2010 to 31-Dec-2018 with four precipitation indices. MLDS, maximum length of consecutive dry days (days), MLWS, maximum length of consecutive wet days (days), Rtotal, total precipitation (mm), Rx5day, maximum consecutive 5-days precipitation (mm). Red lines indicates the historical mean of each index in the time series. Blue line indicates the smoothed trends in each index using the 'loess' method.

the plant development and the yield. These indices can also be useful to improve variety recommendation for climate adaptation in marginal production environments (van Etten et al. 2019).

Overall, CHIRPS data can be used in many applications and currently has over 800 citations from studies using this tool. Many applications are the field of agriculture, hydrologic modelling and drought monitoring, but also some studies using this in disease control programs (e.g. Thomson et al. (2017), Horn et al. (2018)). The *chirps* package aims to make it possible for researchers in these fields to implement this tool into a replicable and reproducible workflow in R.

## Acknowledgements

This work was supported by The Nordic Joint Committee for Agricultural and Food Research (grant num. 202100-2817). The idea for this package was conceived during the course “Analysing Spatial Data” at the Norwegian School of Economics (NHH), we thank Professor Roger Bivand for his insights.

## References

- Aguilar, E., T. C. Peterson, P. Ramírez Obando, R. Frutos, J. A. Retana, M. Solera, J. Soley, et al. 2005. “Changes in precipitation and temperature extremes in Central America and northern South America, 1961–2003.” *Journal of Geophysical Research* 110 (D23): D23107. <https://doi.org/10.1029/2005JD006119>.
- Anderson, Martha C., Christopher Hain, Brian Wardlaw, Agustin Pimstein, John R. Mecikalski, and William P. Kustas. 2011. “Evaluation of Drought Indices Based on Thermal Remote Sensing of Evapotranspiration over the Continental United States.” *Journal of Climate* 24 (8): 2025–44. <https://doi.org/10.1175/2010JCLI3812.1>.
- Auguie, Baptiste. 2017. *gridExtra: Miscellaneous Functions for “Grid” Graphics*. <https://CRAN.R-project.org/package=gridExtra>.
- Chamberlain, Scott. 2019. *crul: HTTP Client*. <https://CRAN.R-project.org/package=crul>.
- de Sousa, Kauê, Fernando Casanoves, Jorge Sellare, Alejandra Ospina, Jose Gabriel Suchini, Amilcar Aguilar, and Leida Mercado. 2018. “How climate awareness influences farmers’ adaptation decisions in Central America?” *Journal of Rural Studies* 64 (November): 11–19. <https://doi.org/10.1016/j.jrurstud.2018.09.018>.
- Funk, Chris, Pete Peterson, Martin Landsfeld, Diego Pedreros, James Verdin, Shrad-dhanand Shukla, Gregory Husak, et al. 2015. “The climate hazards infrared precipitation with stations—a new environmental record for monitoring extremes.” *Scientific Data* 2 (December): 150066. <https://doi.org/10.1038/sdata.2015.66>.
- Horn, Lindsay M., Anjum Hajat, Lianne Sheppard, Colin Quinn, James Colborn, Maria Fernanda Zermoglio, Eduardo S. Gudo, Tatiana Marrufo, and Kristie L. Ebi. 2018. “Association between precipitation and diarrheal disease in Mozambique.” *International Journal of Environmental Research and Public Health* 15 (4). <https://doi.org/10.3390/ijerph15040709>.
- Huffman, G., D. Bolvin, D. Braithwaite, K. Hsu, R. Joyce, and P. Xie. 2014. “Integrated Multi-satellitE Retrievals for GPM (IMERG), version 4.4.” NASA’s Precipitation Processing Center. <ftp://arthurhou.pps.eosdis.nasa.gov/gpmdata/>.
- Kehel, Z., J. Crossa, and M. Reynolds. 2016. “Identifying Climate Patterns during the Crop-Growing Cycle from 30 Years of CIMMYT Elite Spring Wheat International

- Yield Trials.” In *Applied Mathematics and Omics to Assess Crop Genetic Resources for Climate Change Adaptive Traits*, edited by Abdallah Bari, Ardesir B. Damania, Michael Mackay, and Selvadurai Dayanandan, 151–74. CRC Press. <https://doi.org/10.1201/b19518-17>.
- Ooms, Jeroen. 2014. “The jsonlite Package: A Practical and Consistent Mapping Between JSON Data and R Objects.” *arXiv:1403.2805 [stat.CO]*. <https://arxiv.org/abs/1403.2805>.
- Pebesma, Edzer. 2018. “Simple Features for R: Standardized Support for Spatial Vector Data.” *The R Journal* 10 (1): 439–46. <https://doi.org/10.32614/RJ-2018-009>.
- R Core Team. 2020. *R: A Language and Environment for Statistical Computing. Version 4.0.0*. Vienna, Austria: R Foundation for Statistical Computing. <https://www.R-project.org/>.
- SERVIR Global. 2019a. *ClimateSERV*. National Aeronautics and Space Administration (NASA); United States Agency for International Development (USAID). <https://climateserv.servirglobal.net/>.
- . 2019b. *Evaporative Stress Index (ESI)*. National Aeronautics and Space Administration (NASA); United States Agency for International Development (USAID). <https://climateserv.servirglobal.net/>.
- Thomson, Madeleine C., Israel Ukawuba, Christine L. Hershey, Adam Bennett, Pietro Ceccato, Bradfield Lyon, and Tufa Dinku. 2017. “Using rainfall and temperature data in the evaluation of national malaria control programs in Africa.” *American Journal of Tropical Medicine and Hygiene* 97: 32–45. <https://doi.org/10.4269/ajtmh.16-0696>.
- van Etten, Jacob, Kauê de Sousa, Amílcar Aguilar, Mirna Barrios, Allan Coto, Matteo Dell’Acqua, Carlo Fadda, et al. 2019. “Crop variety management for climate adaptation supported by citizen science.” *Proceedings of the National Academy of Sciences* 116 (10): 4194–9. <https://doi.org/10.1073/pnas.1813720116>.
- Wickham, Hadley, Mara Averick, Jennifer Bryan, Winston Chang, Lucy D’Agostino McGowan, Romain François, et al. 2019. “Welcome to the Tidyverse.” *Journal of Open Source Software* 4 (43): 1686. <https://doi.org/10.21105/joss.01686>.