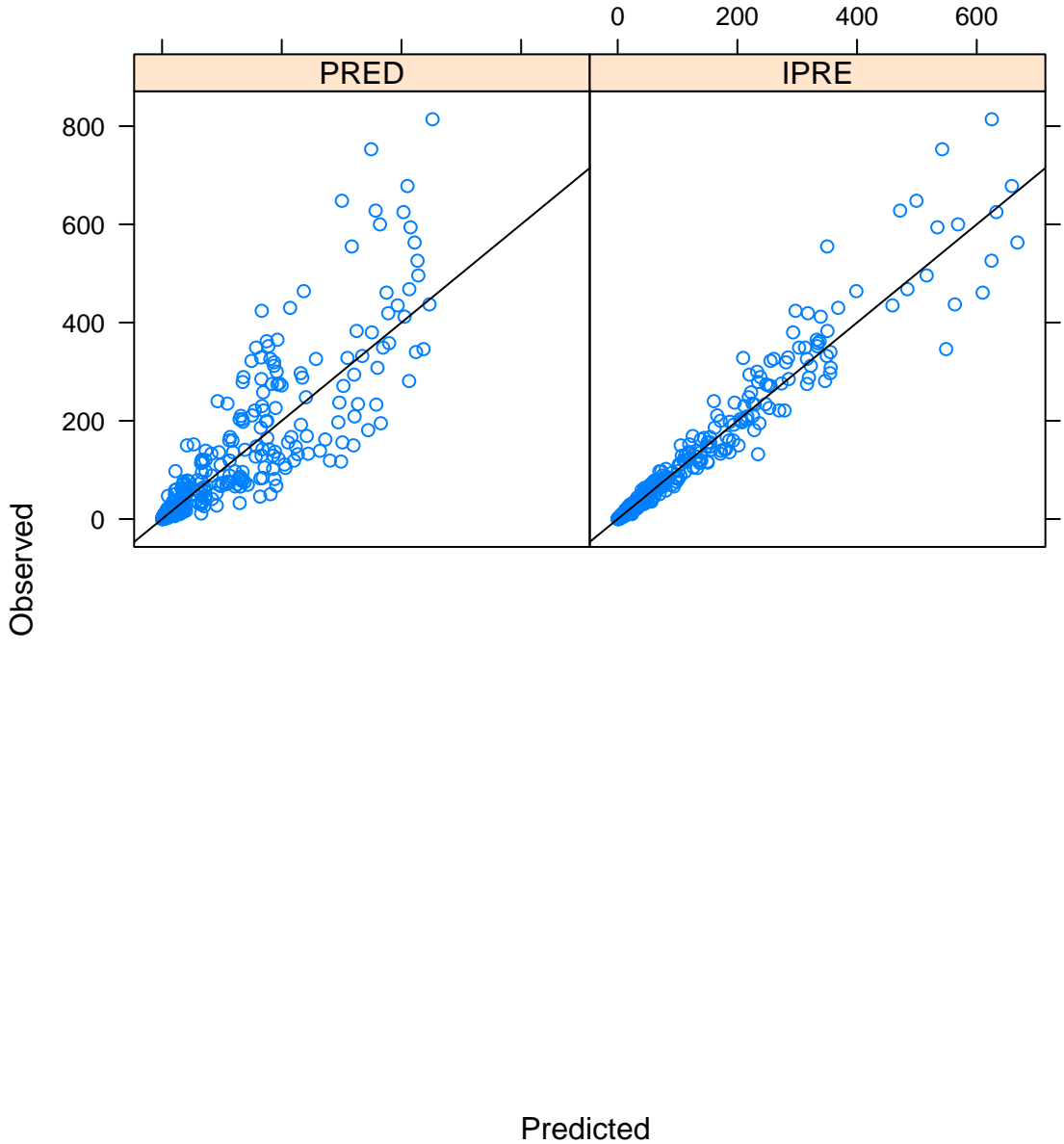


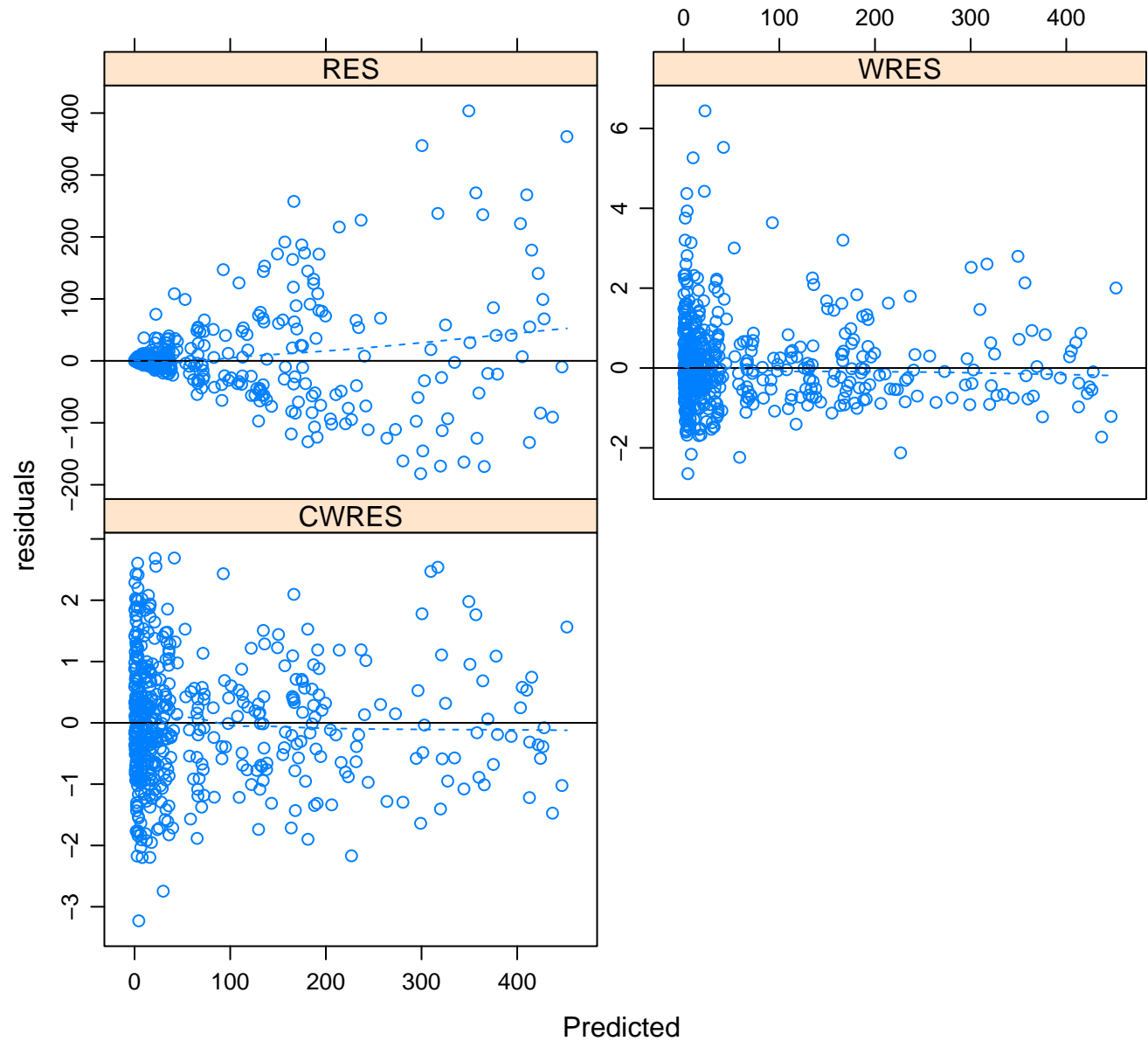
# Model 1005

## Observed vs. Predicted for all data



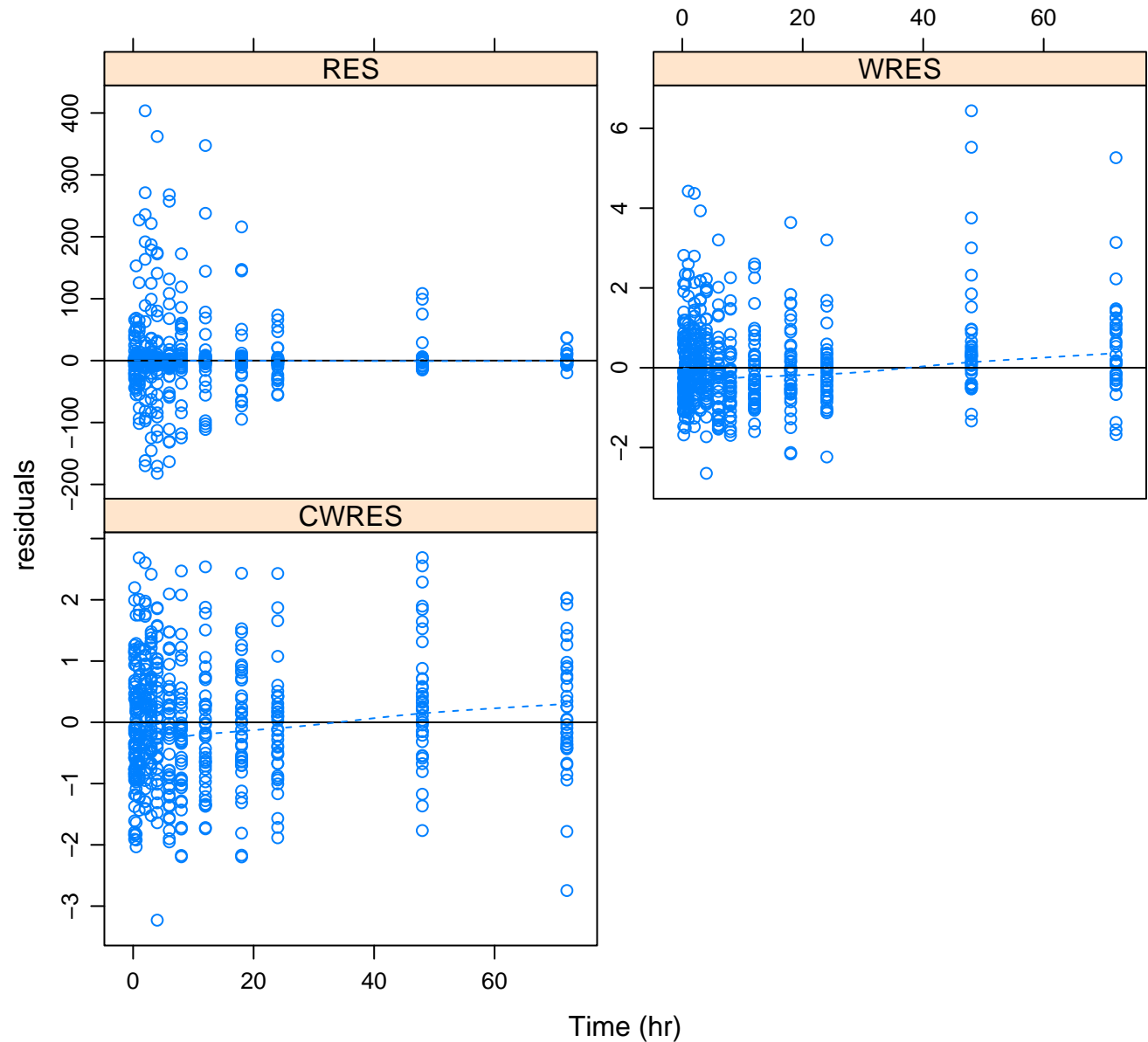
# Model 1005

## Residuals vs. Predicted for all data



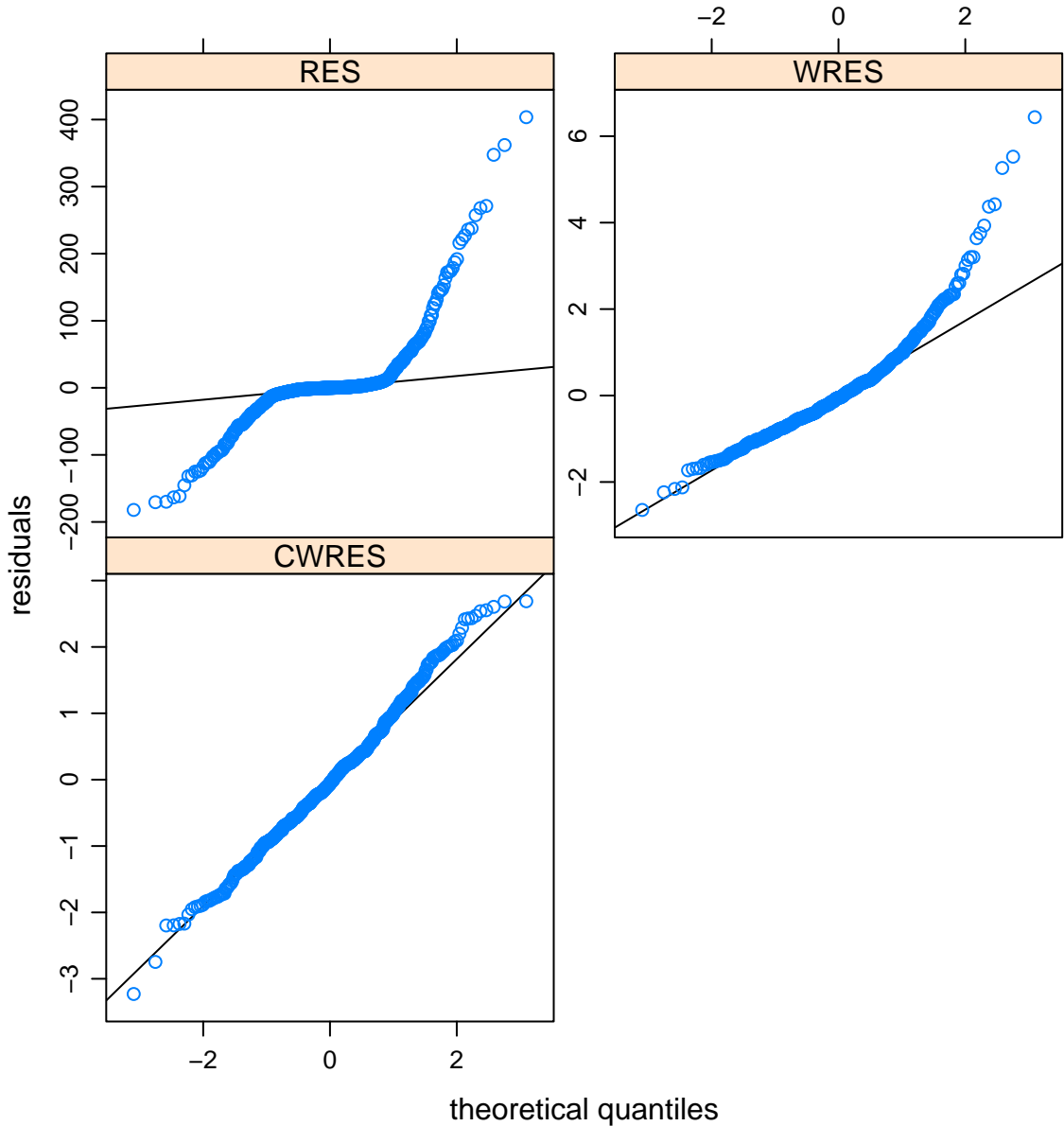
# Model 1005

## Residuals vs. Time for all data



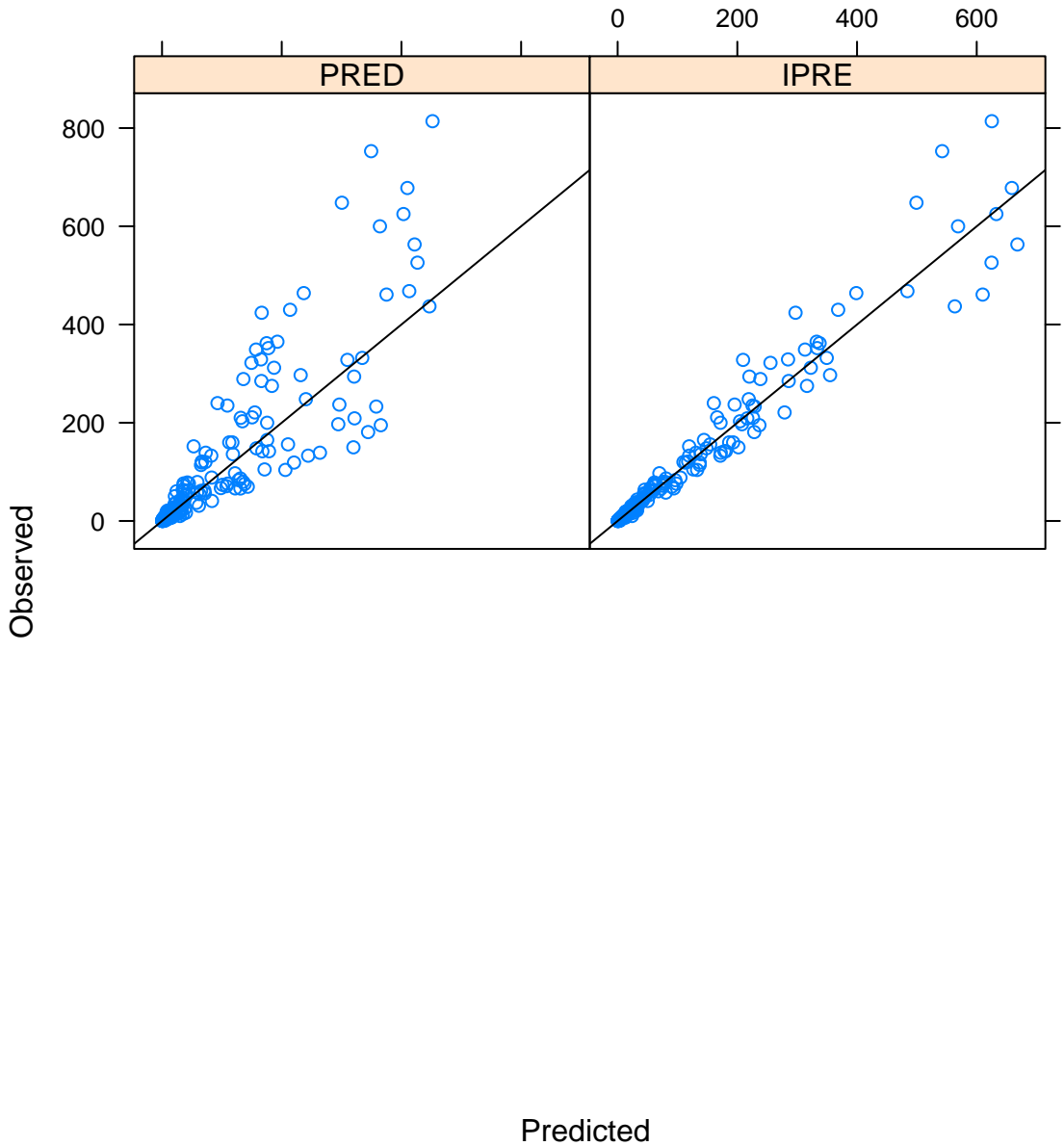
# Model 1005

## Normal Q-Q Plot Residuals for all data



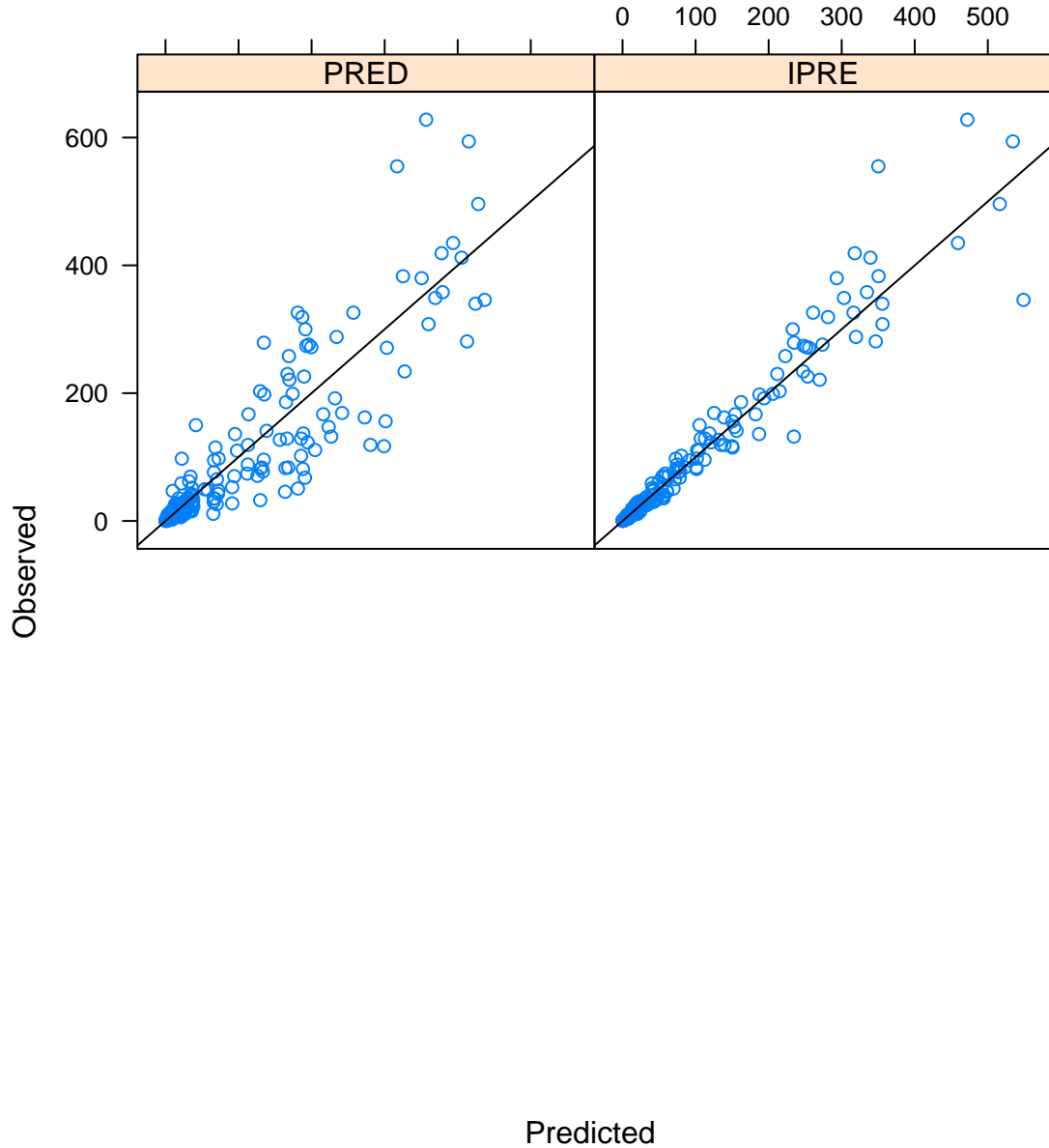
# Model 1005

## Observed vs. Predicted for female data



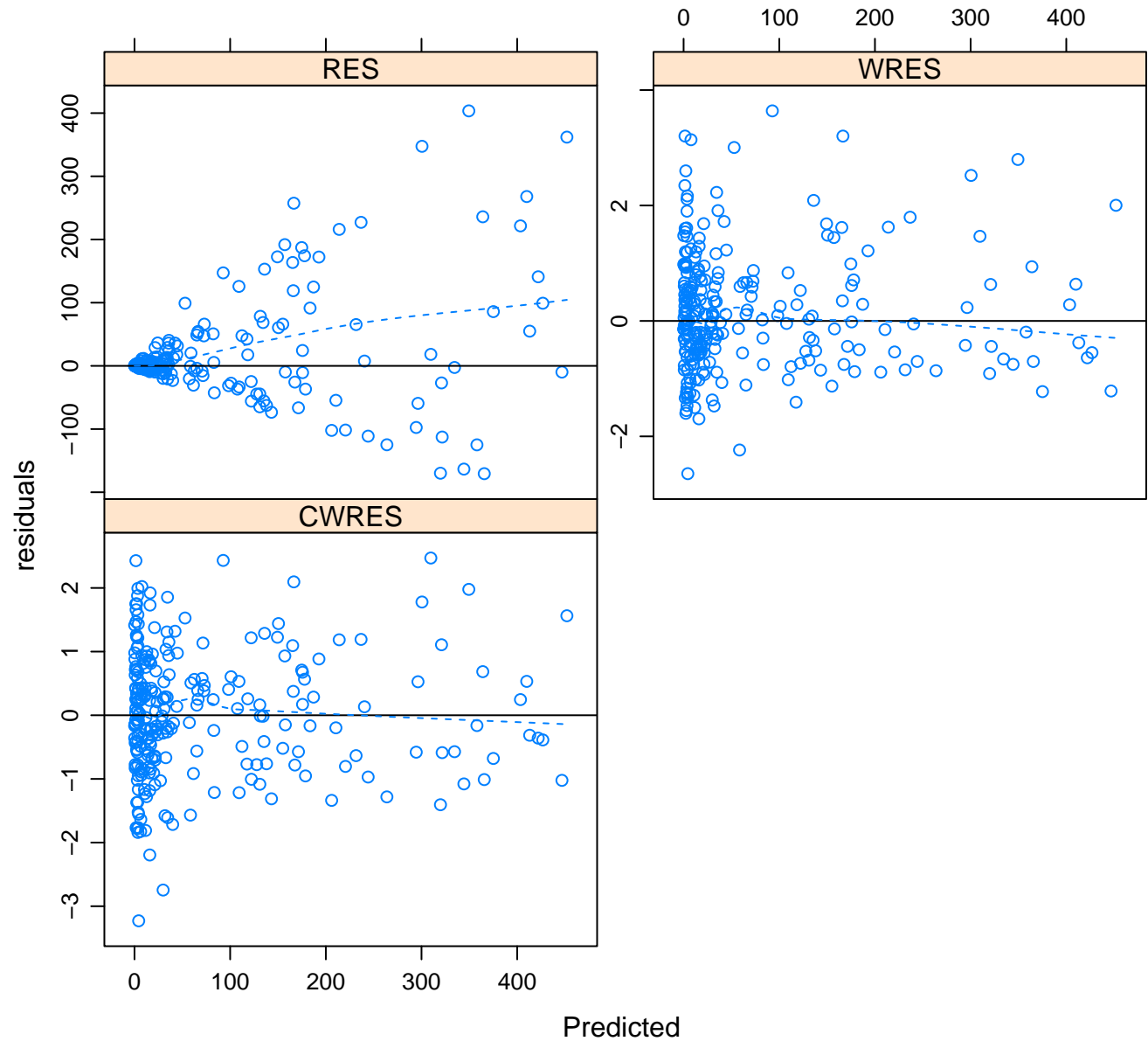
# Model 1005

## Observed vs. Predicted for male data



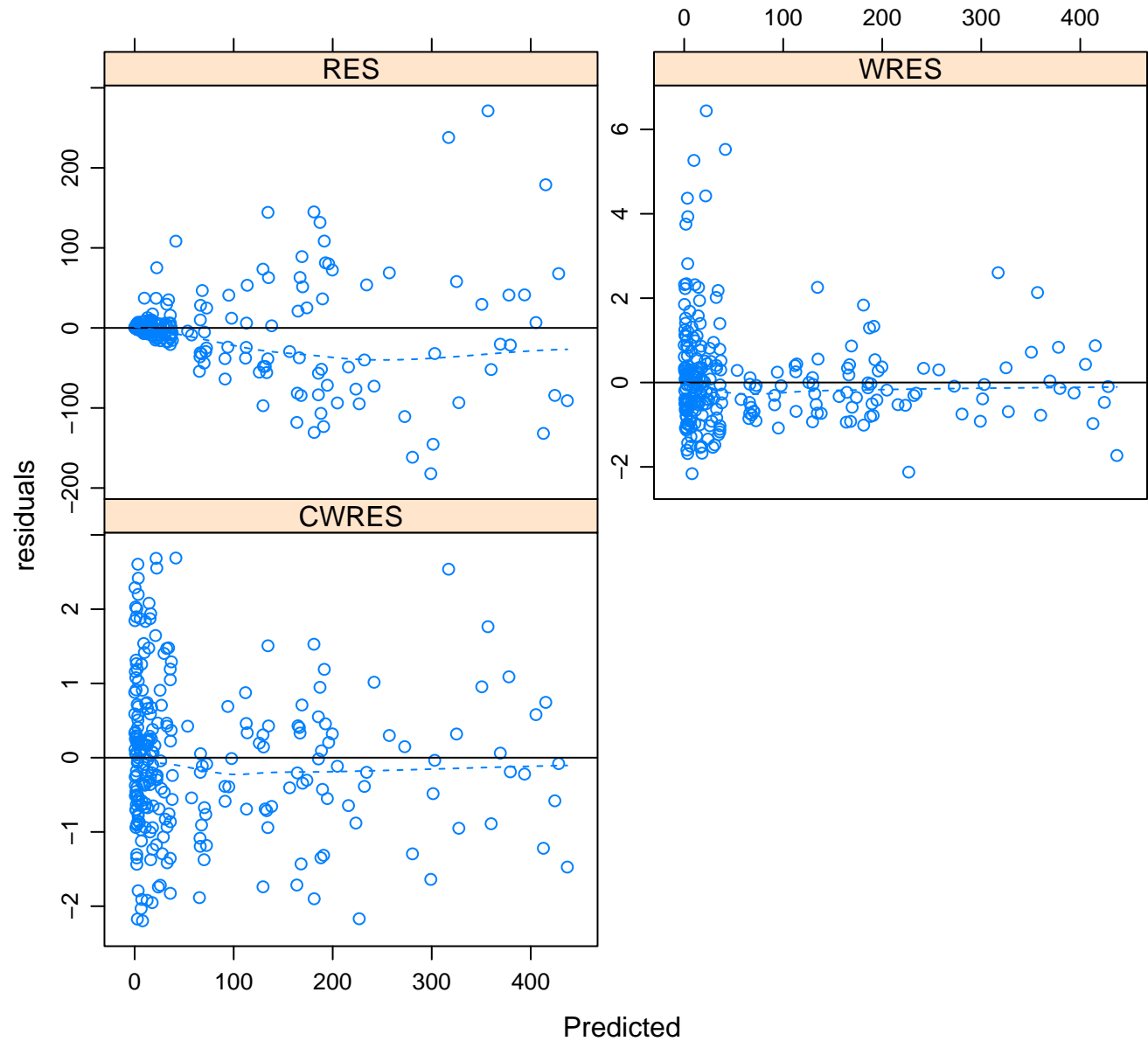
# Model 1005

## Residuals vs. Predicted for female data



# Model 1005

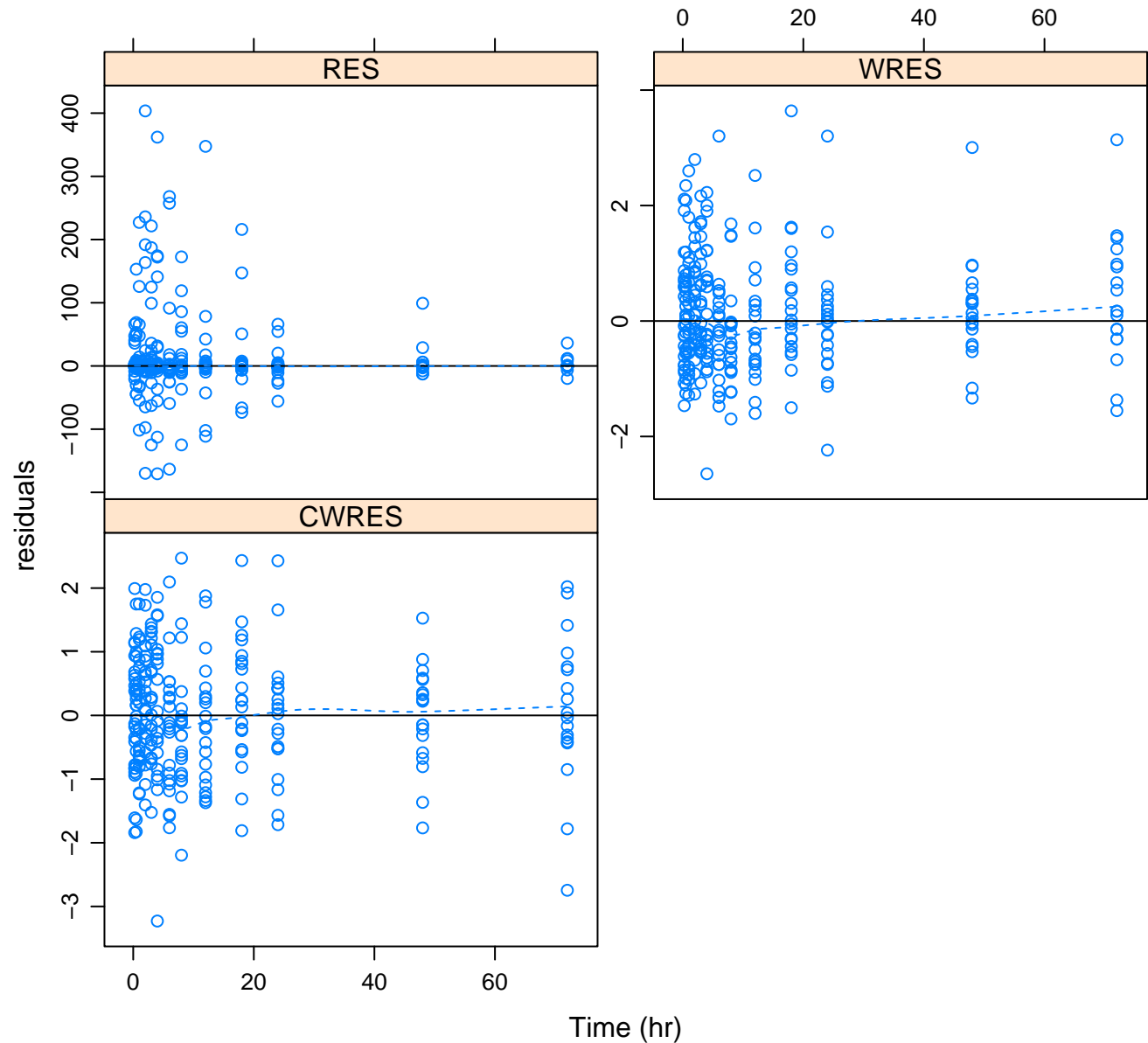
## Residuals vs. Predicted for male data





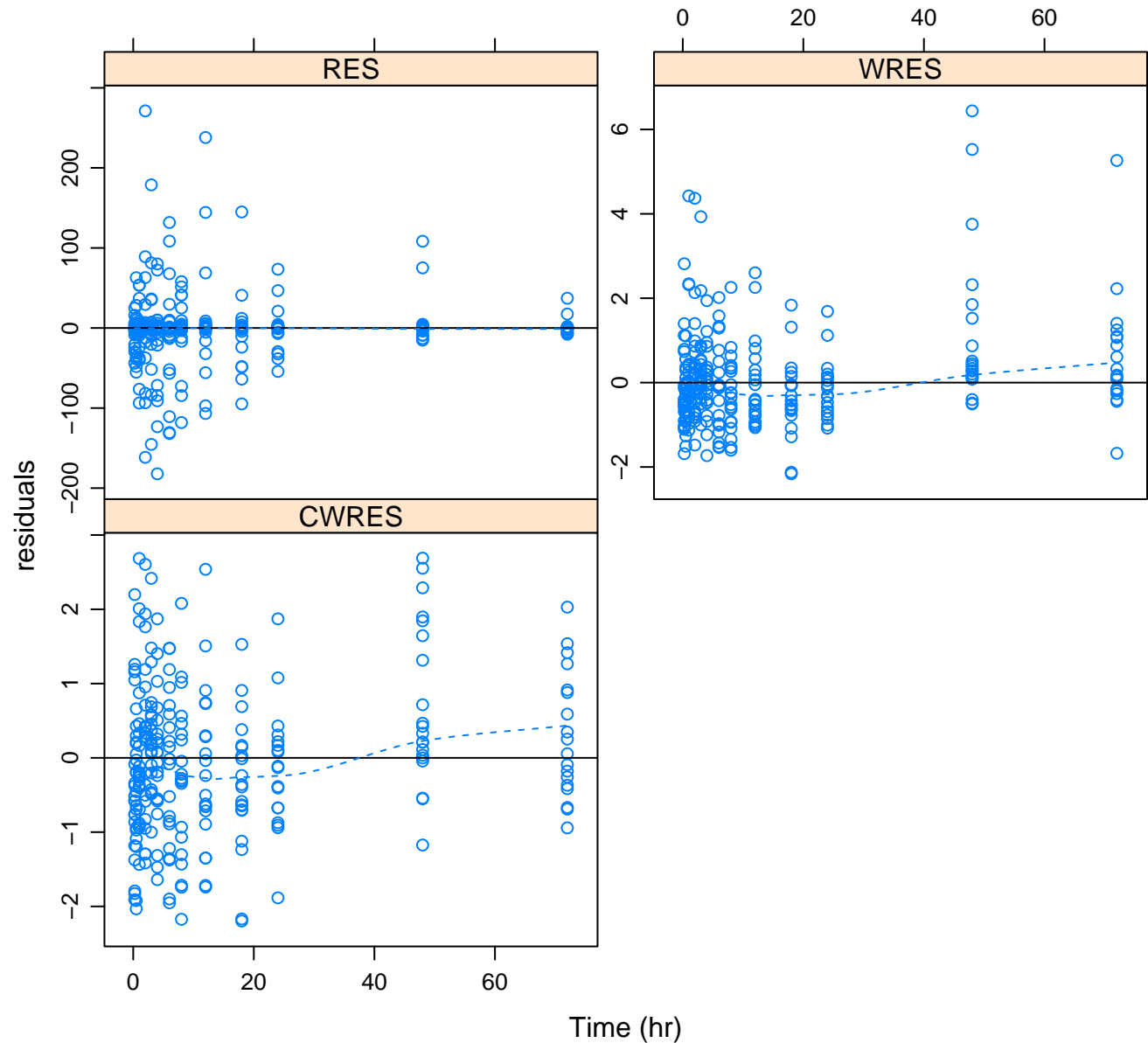
# Model 1005

## Residuals vs. Time for female data



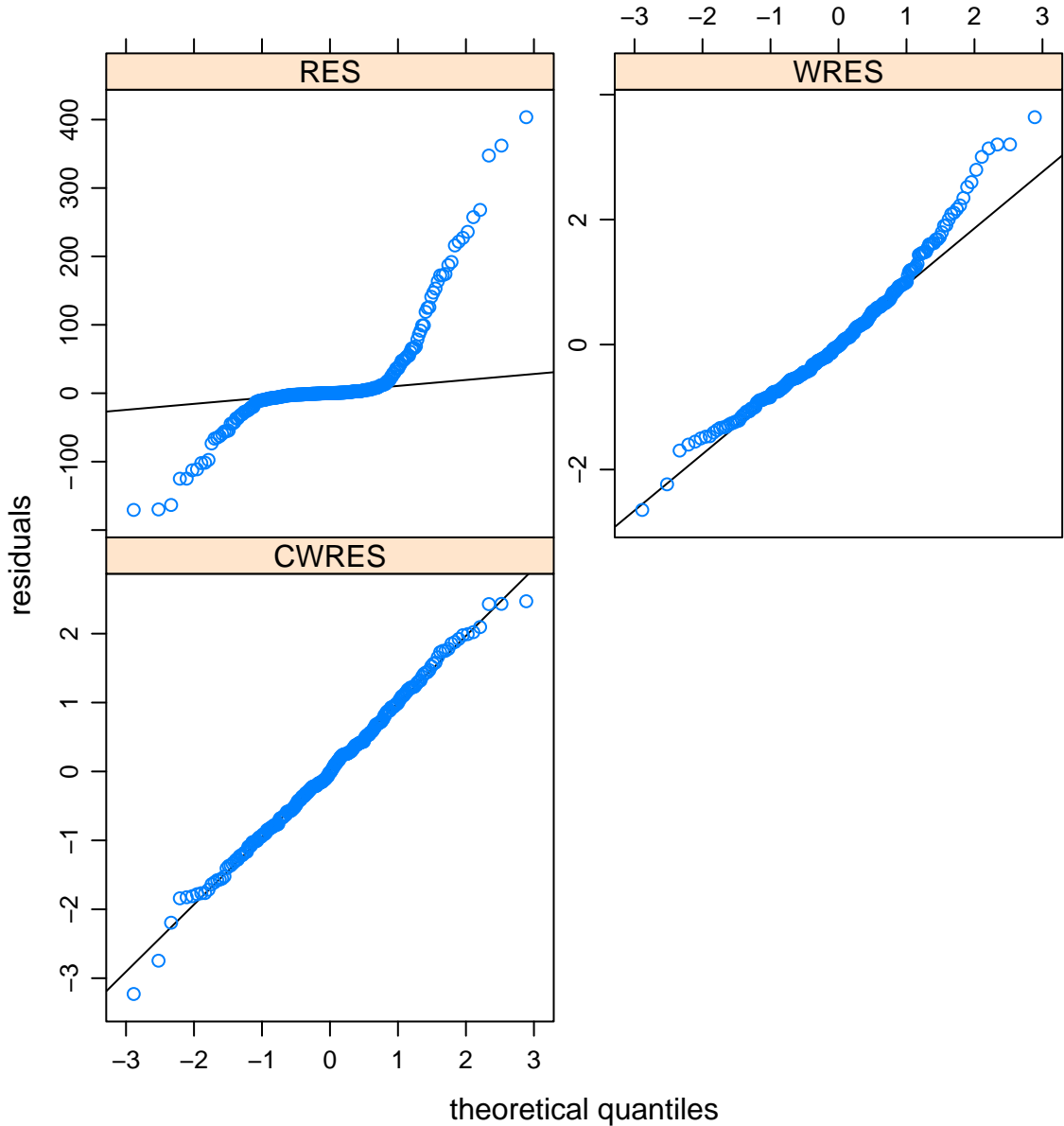
# Model 1005

## Residuals vs. Time for male data



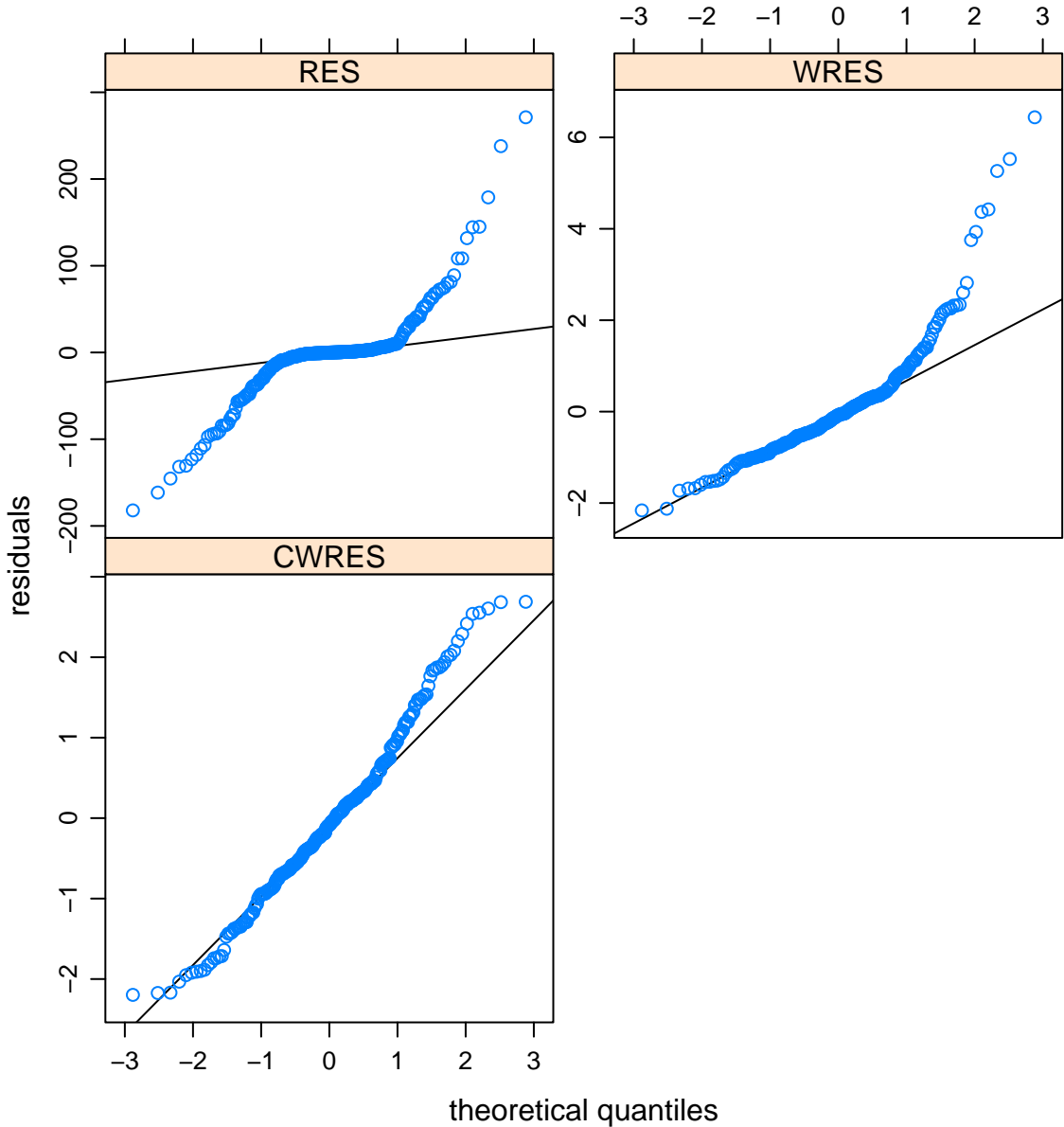
# Model 1005

## Normal Q-Q Plot Residuals for female data

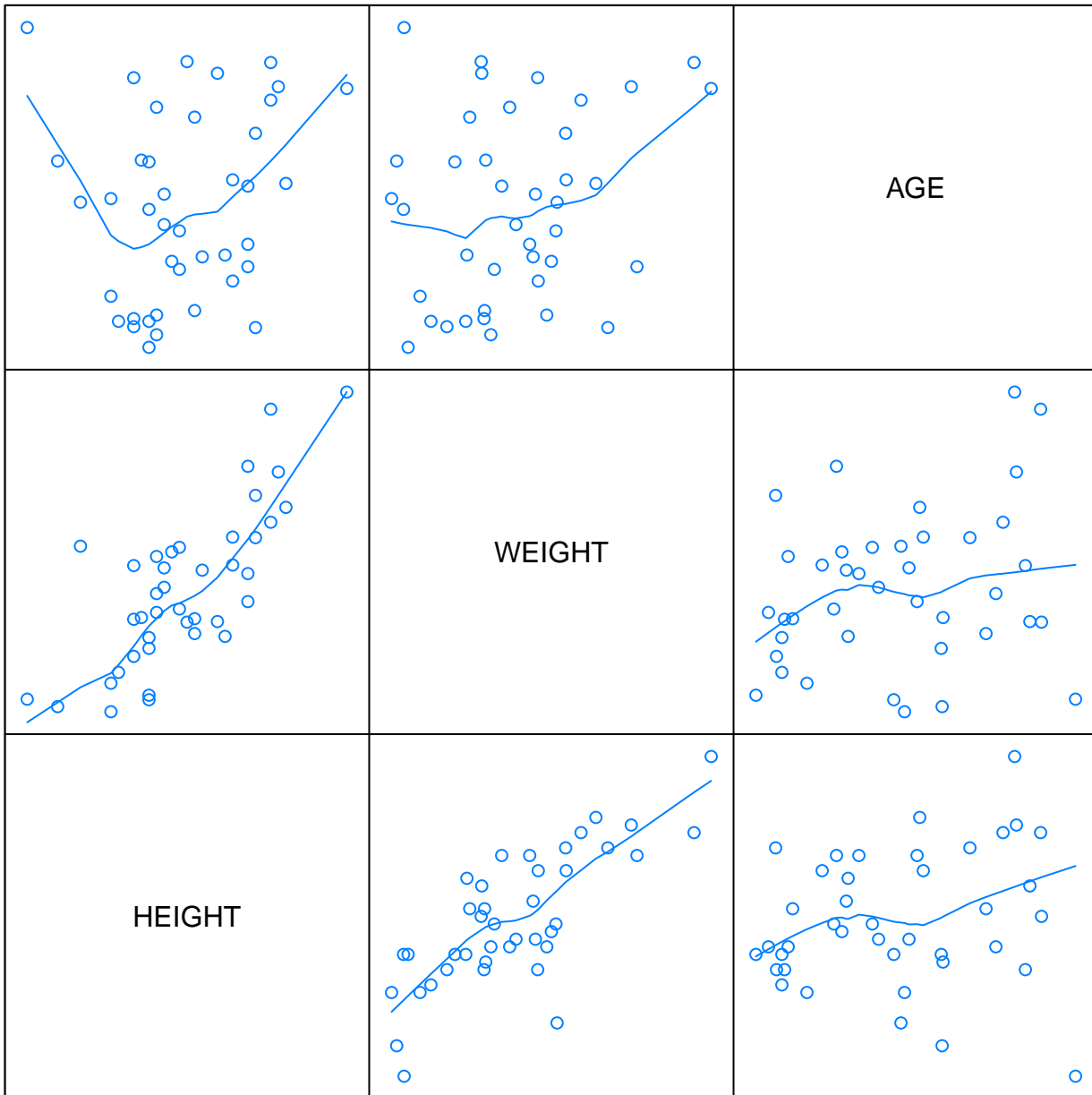


# Model 1005

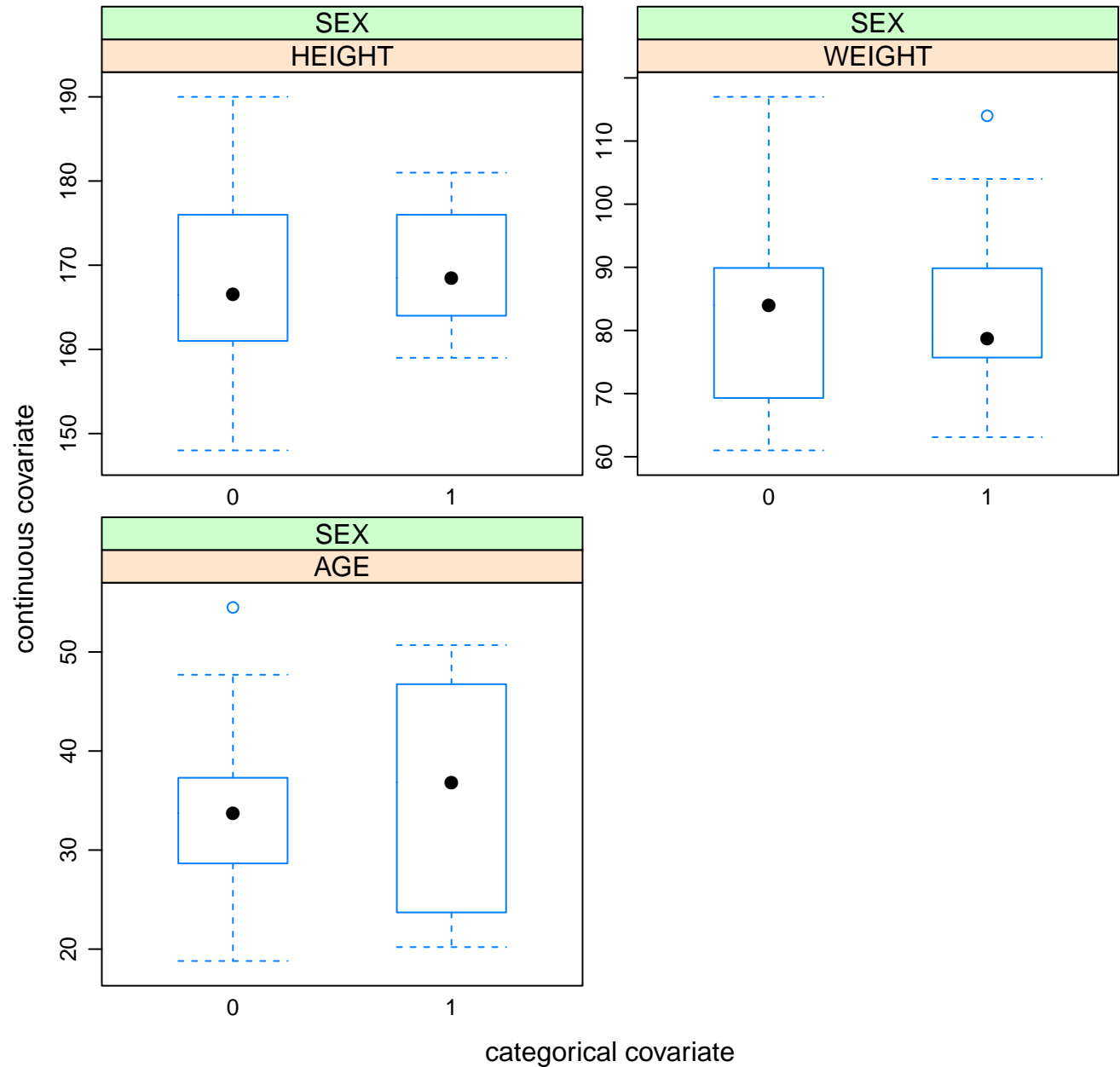
## Normal Q-Q Plot Residuals for male data



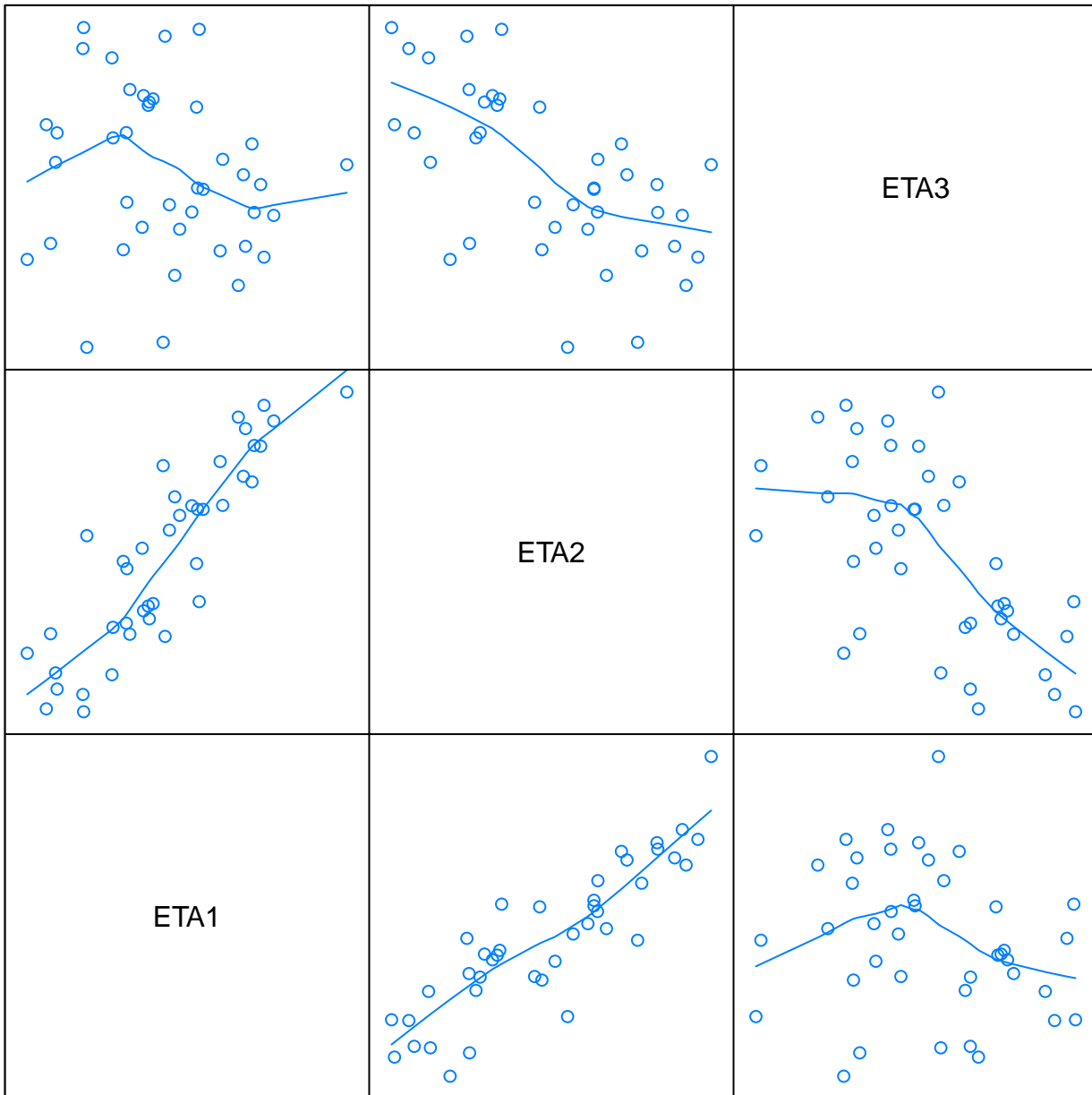
# Covariate Scatterplots



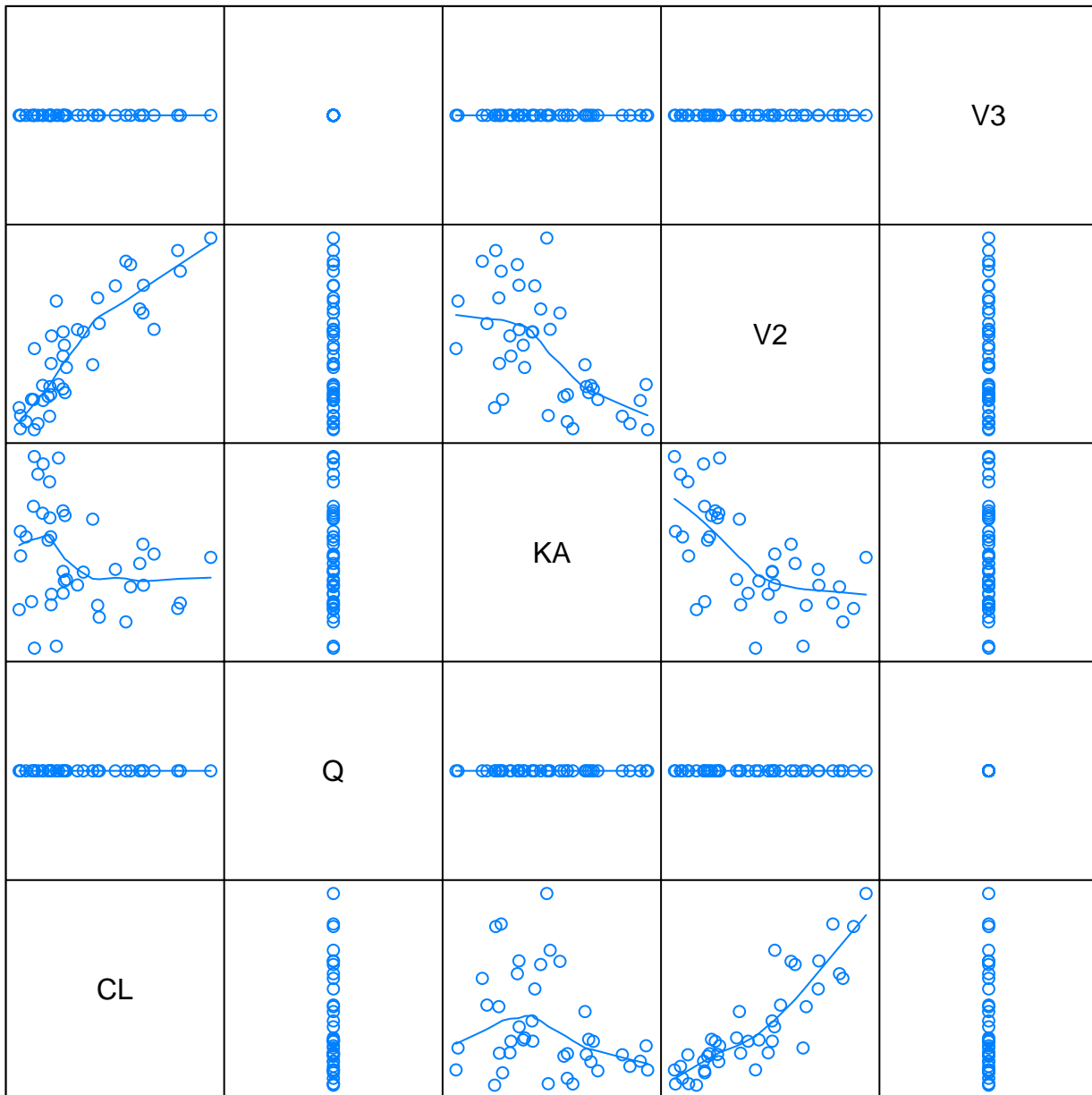
# Continuous Covariates vs. Categorical Covariates



# ETA Scatterplots

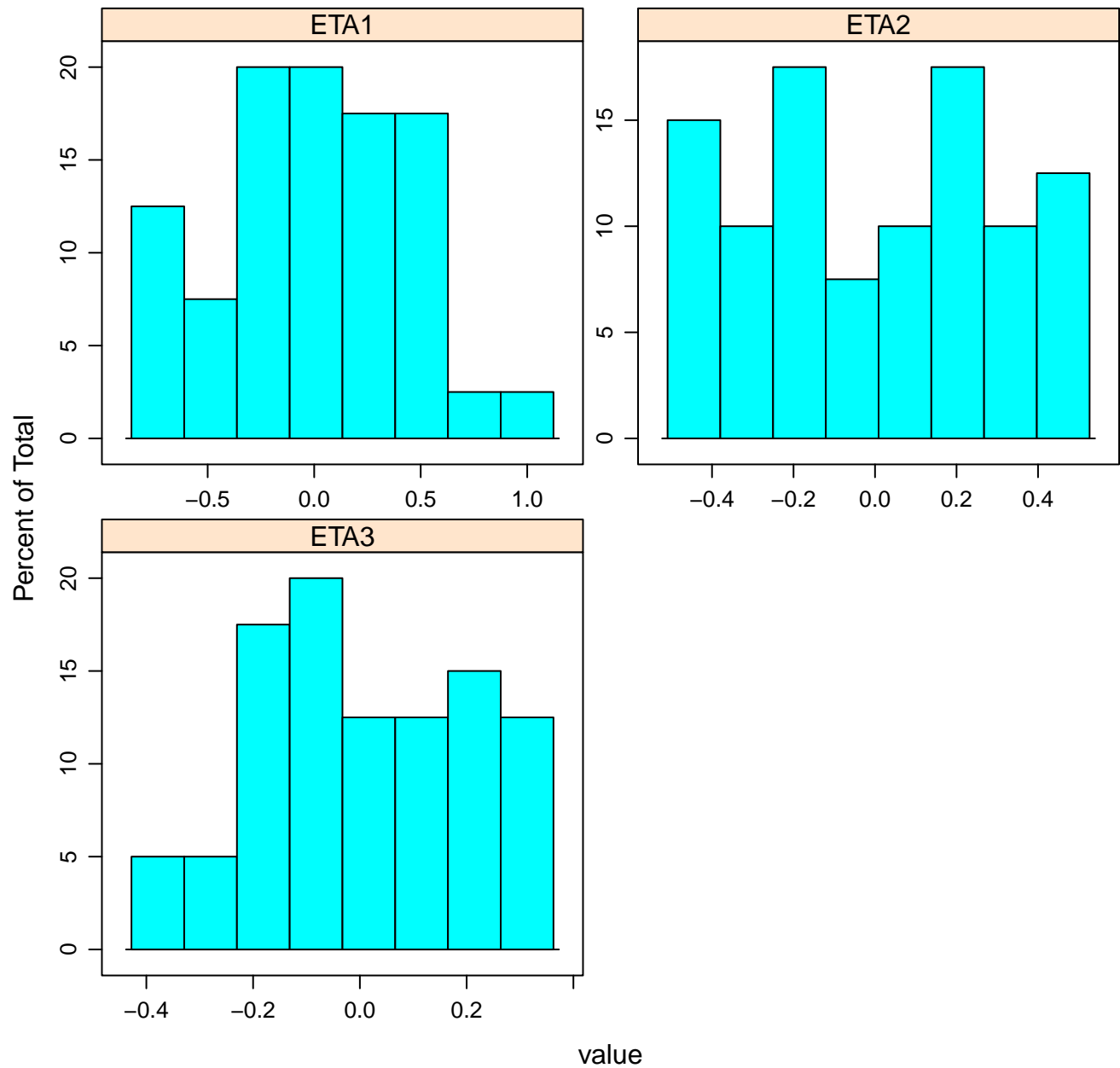


# Parameter Scatterplots

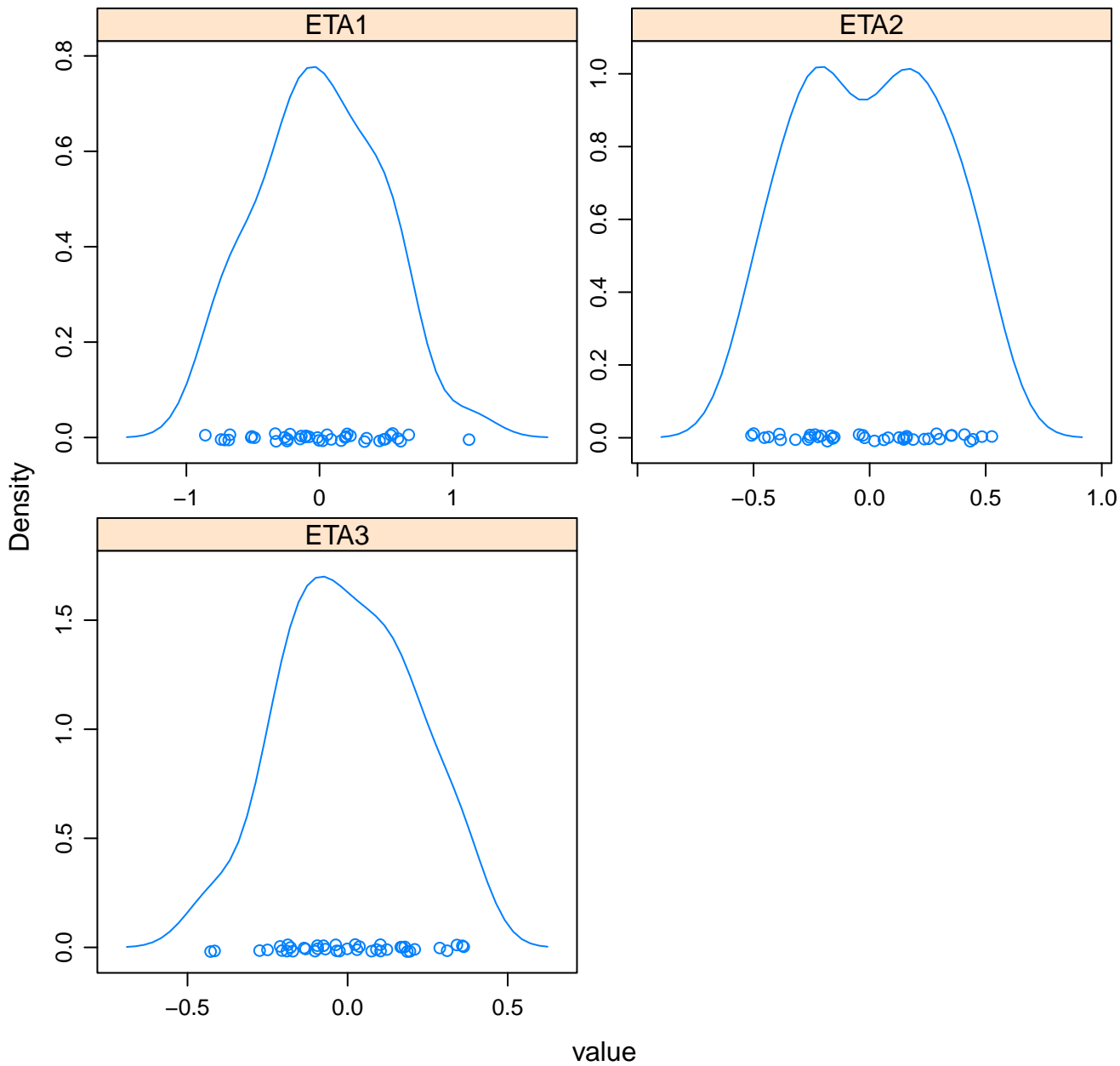




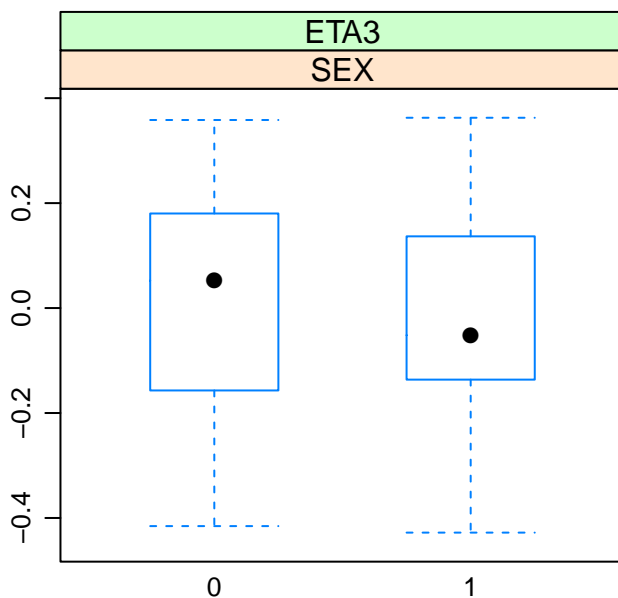
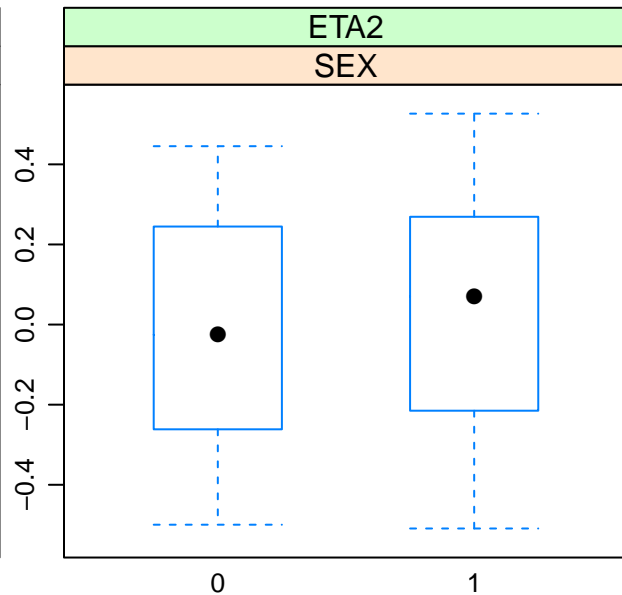
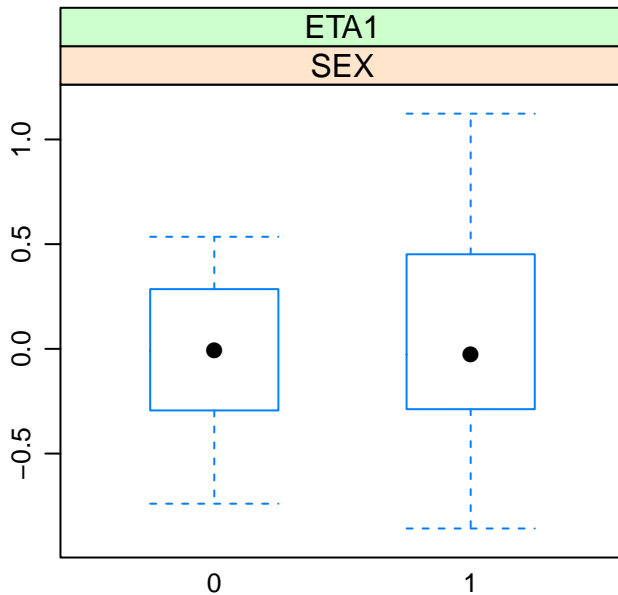
# Histograms of Etas



# Density of Etas

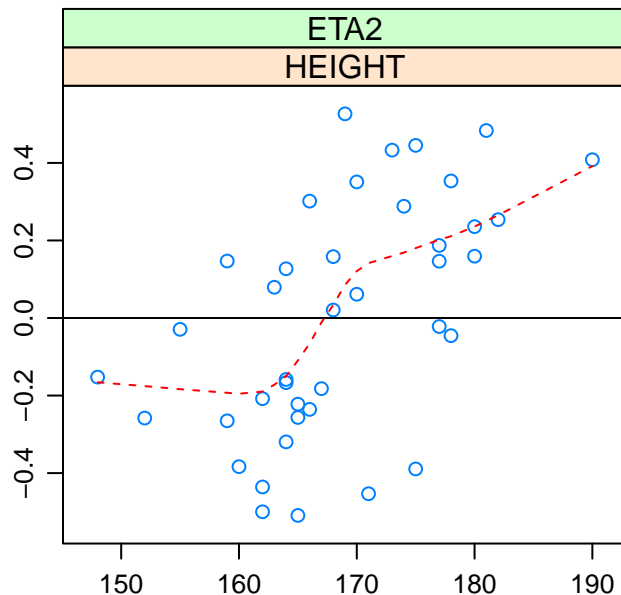
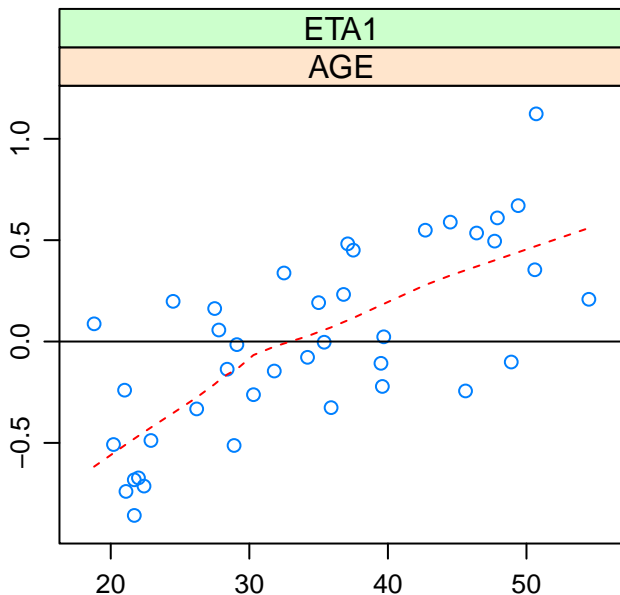
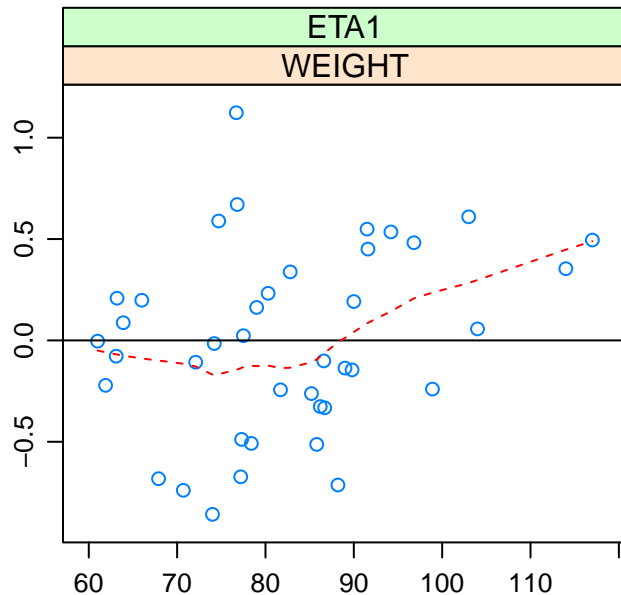
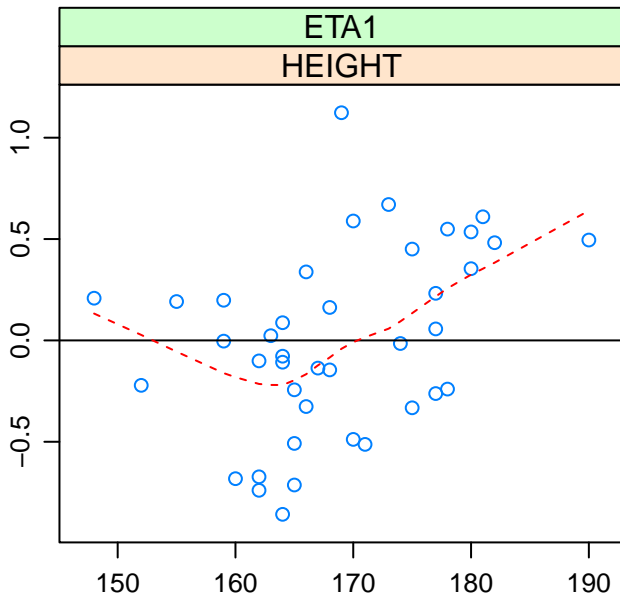


# Boxplots of Etas by Categorical Covariate



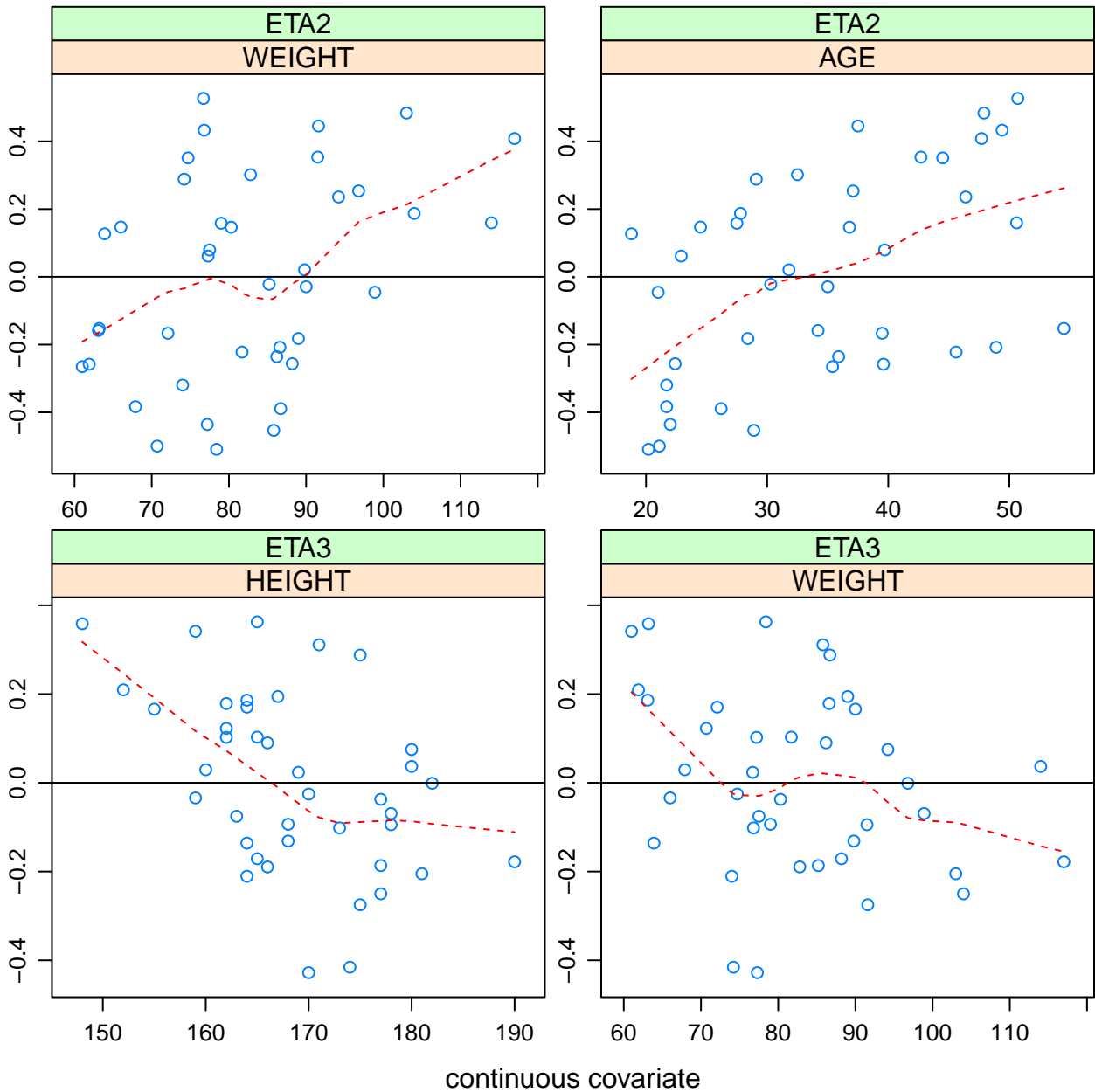
categorical covariate level

# Etas vs. Continuous Covariates

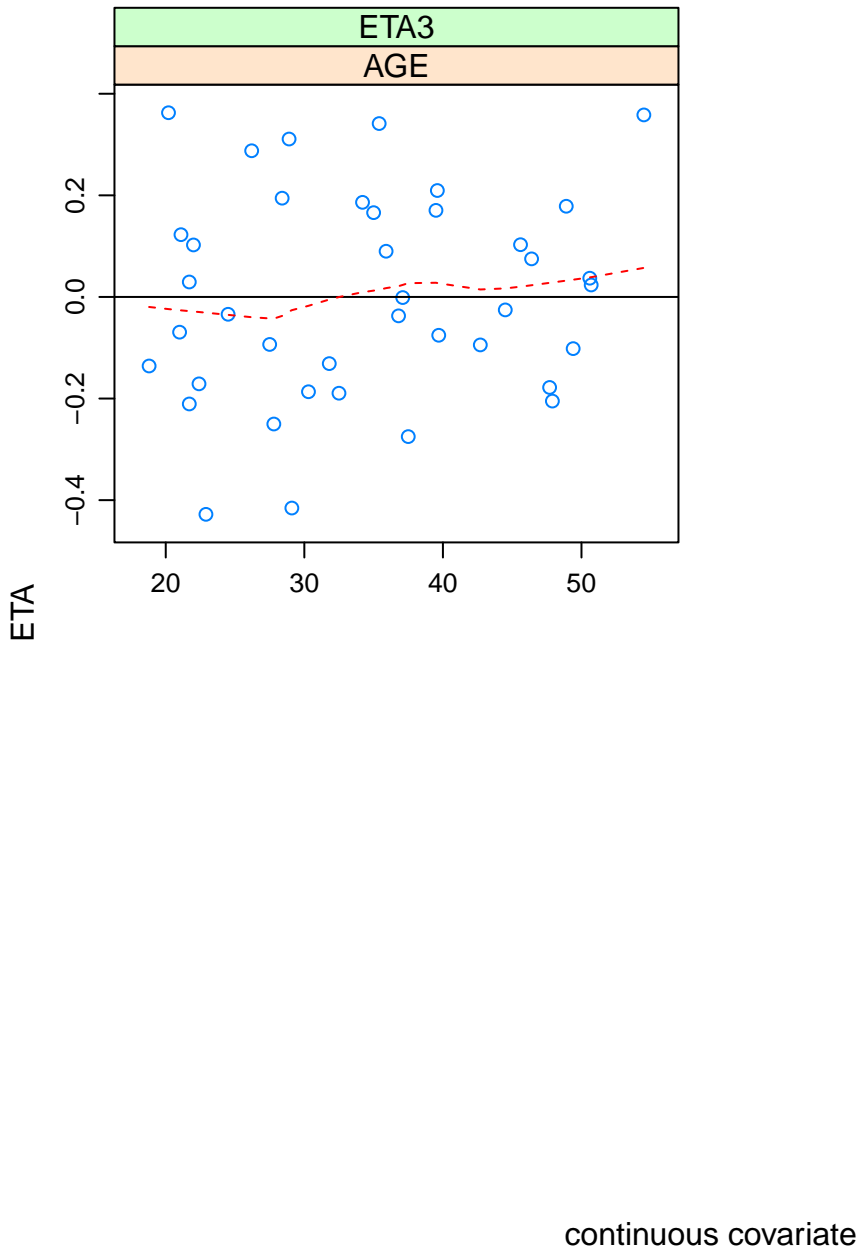


continuous covariate

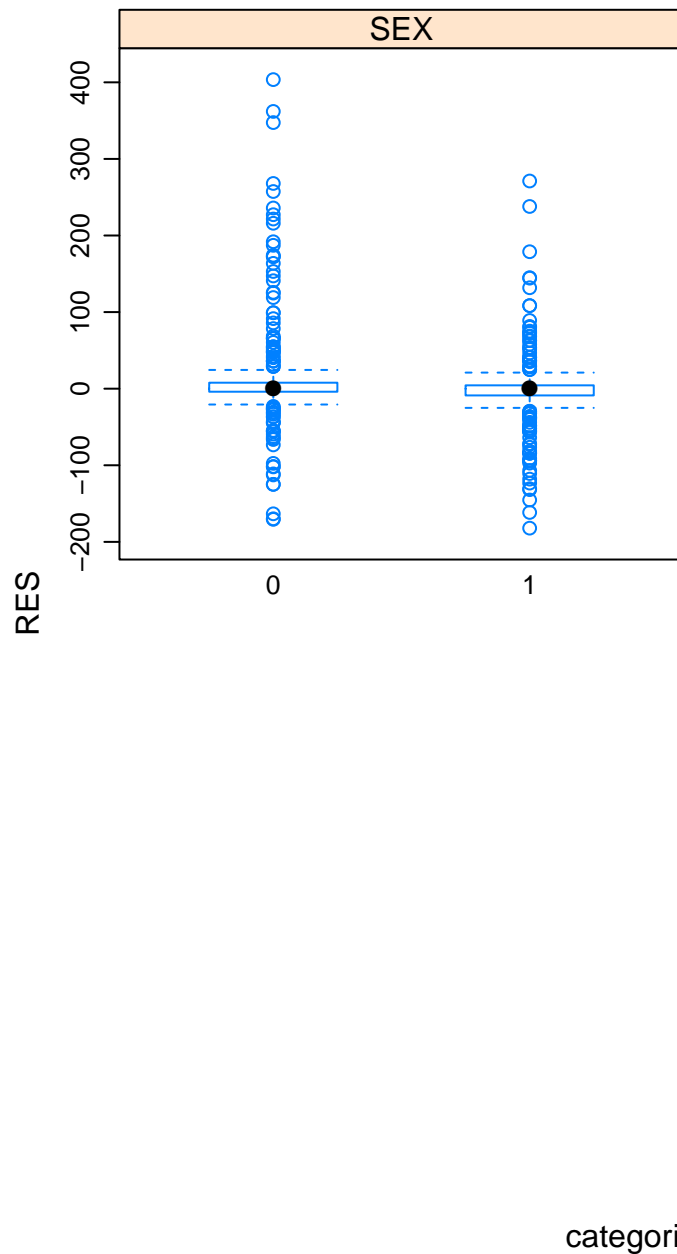
# Etas vs. Continuous Covariates



# Etas vs. Continuous Covariates

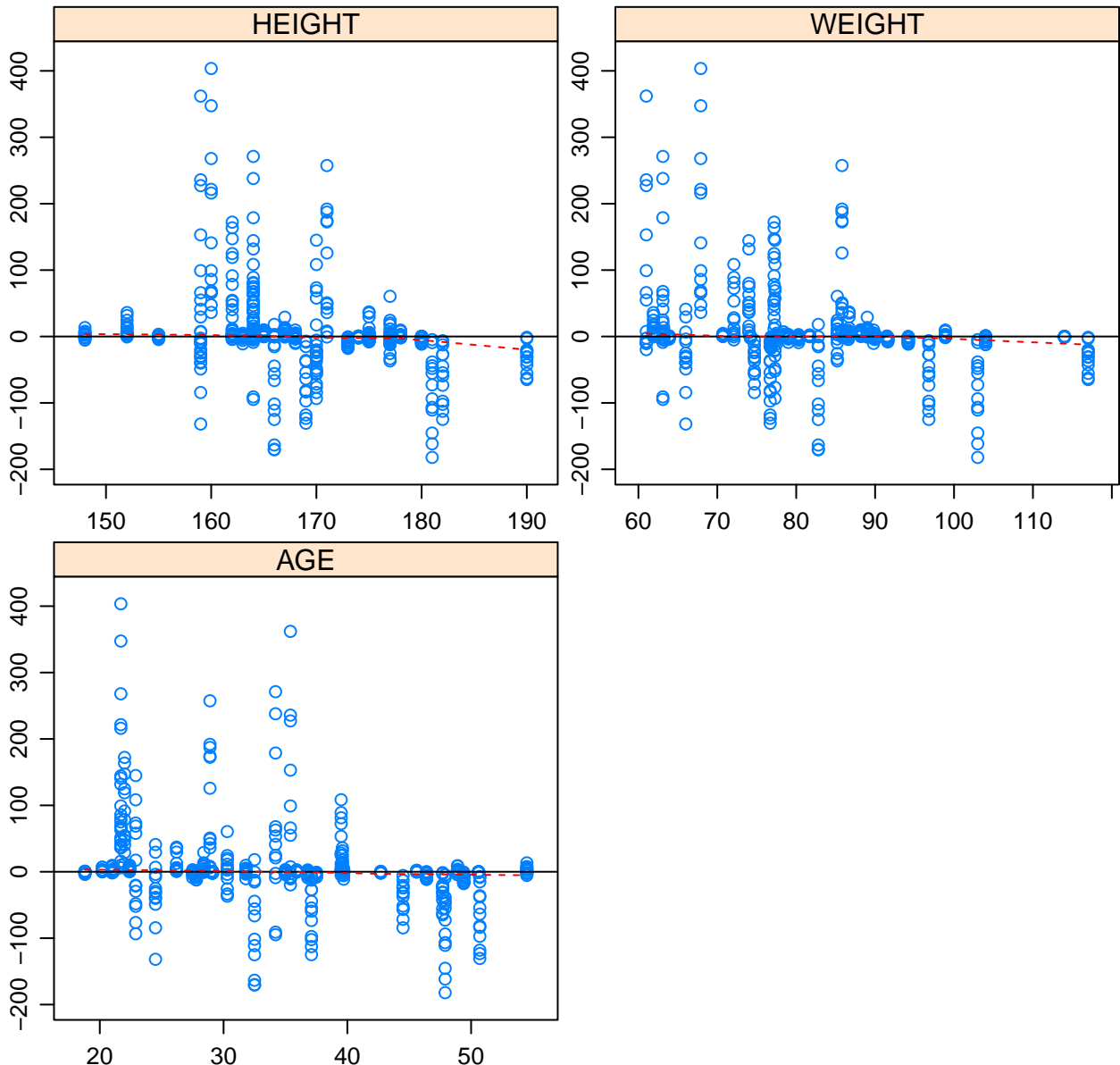


# RES vs. Categorical Covariates



# RES vs. Continuous Covariates

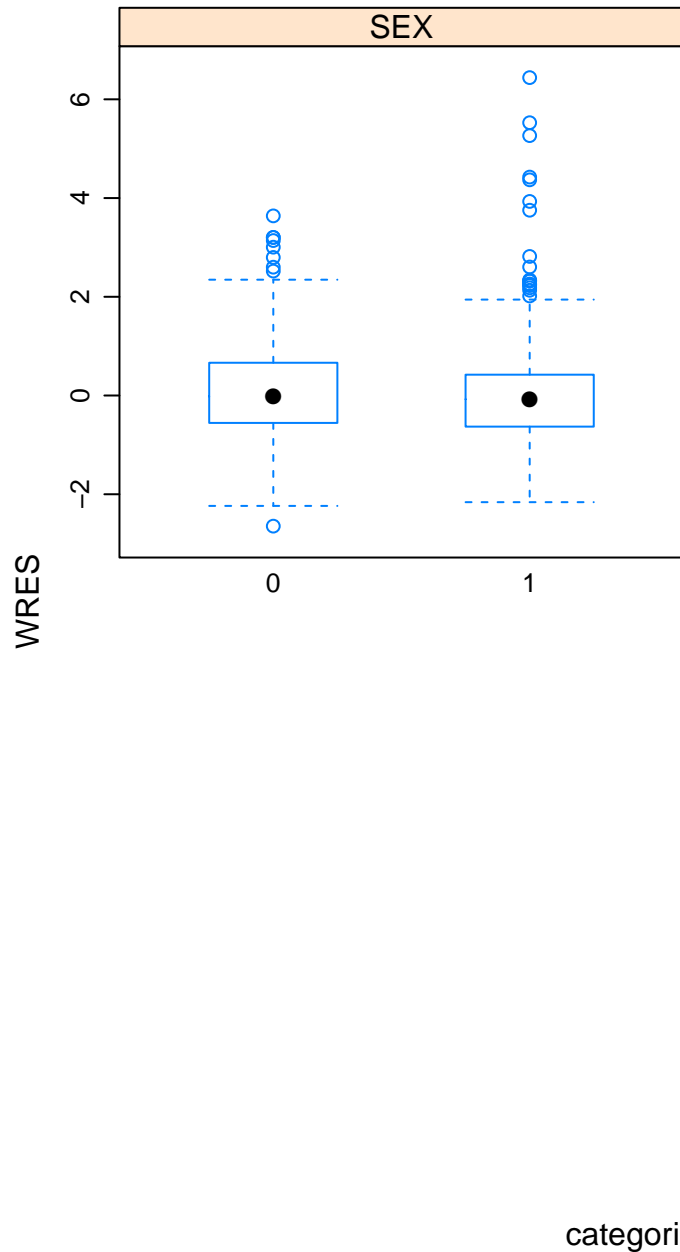
RES



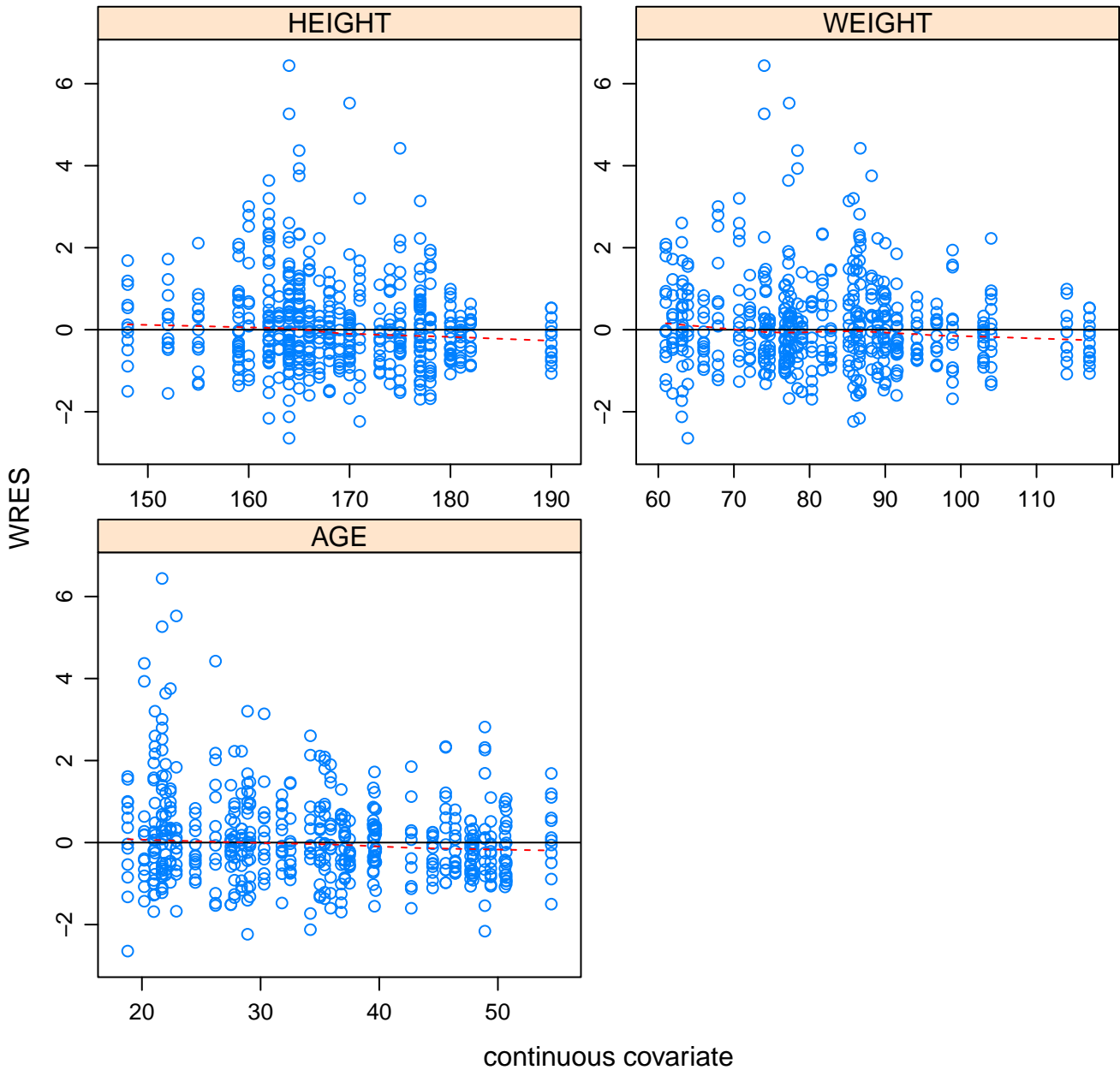
continuous covariate



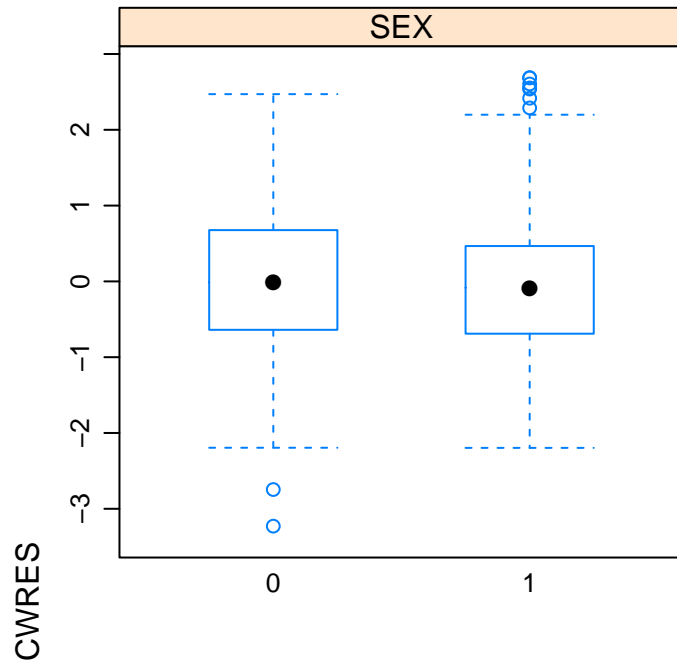
# WRES vs. Categorical Covariates



# WRES vs. Continuous Covariates



# CWRES vs. Categorical Covariates

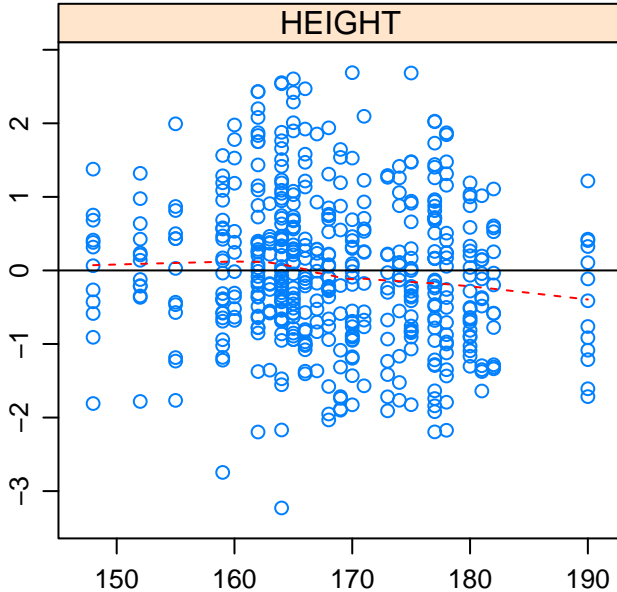


categorical Covariate

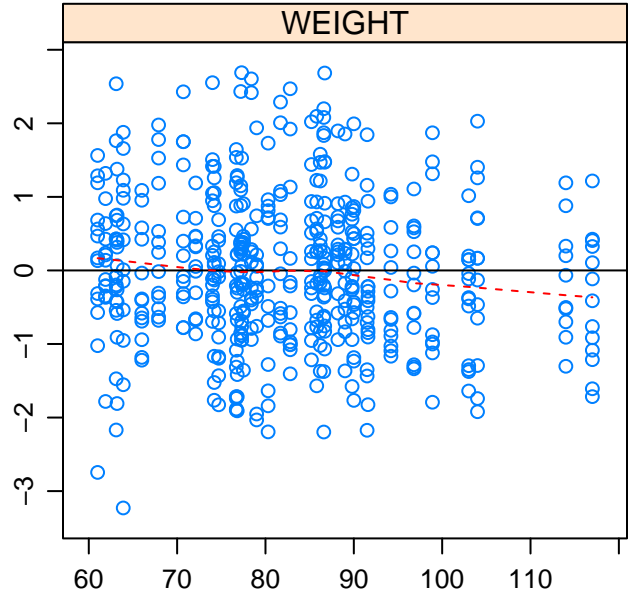
# CWRES vs. Continuous Covariates

CWRES

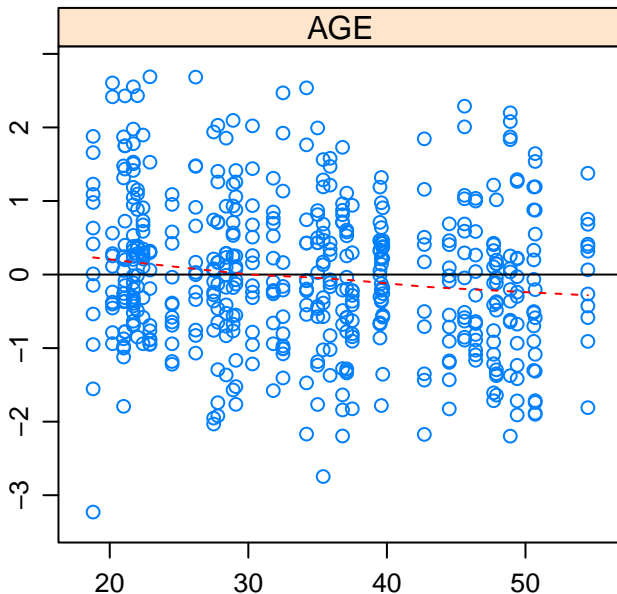
HEIGHT



WEIGHT

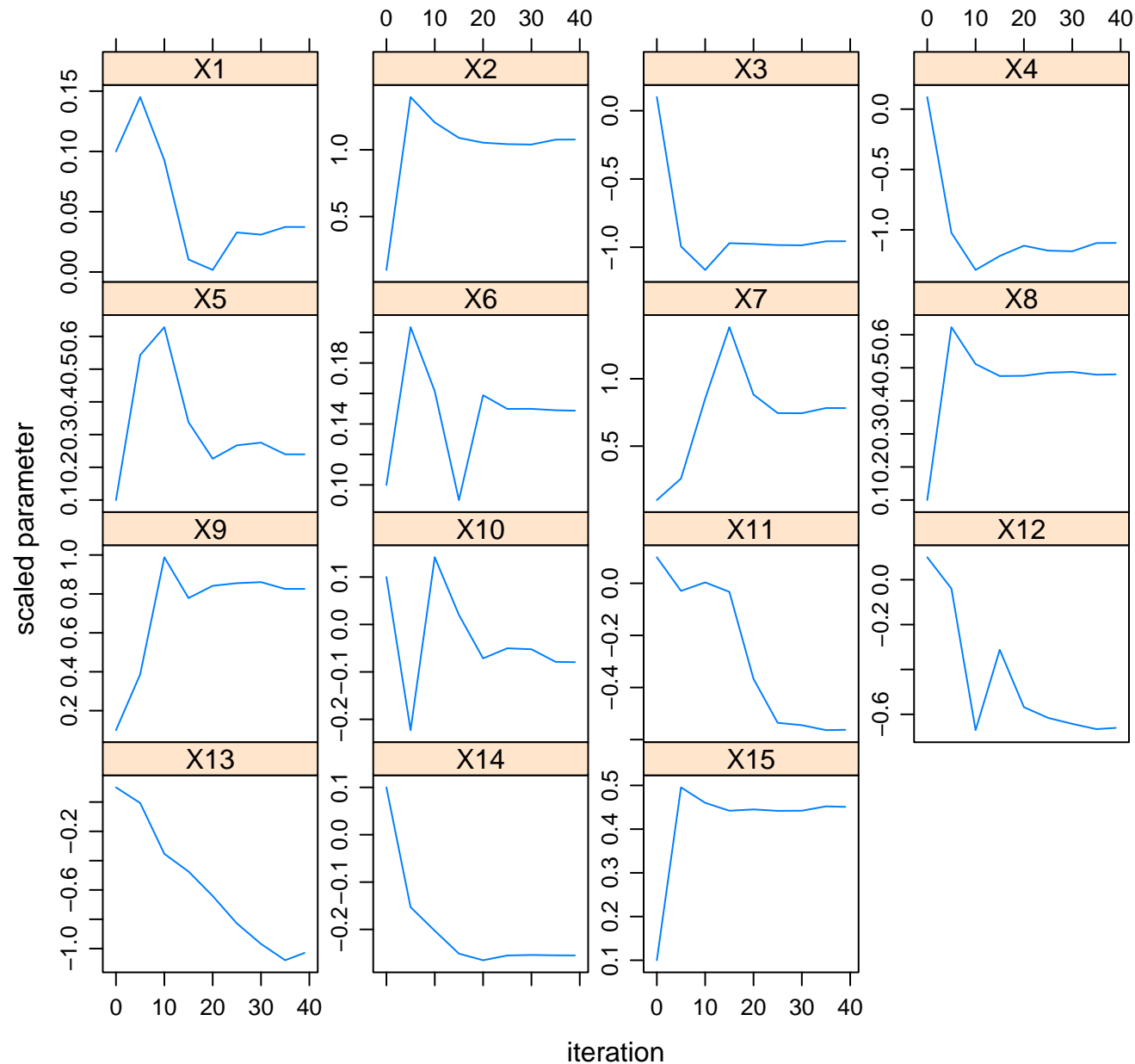


AGE



continuous covariate

# Model 1005 parameter search



# Model 1005 gradient search

