

# BART::wbart: BART for Numeric Outcomes

*Robert McCulloch and Rodney Sparapani*

## Contents

<b>1</b>	<b>BART</b>	<b>1</b>
1.1	Boston Housing Data . . . . .	1
1.2	A Quick Look at the Data . . . . .	2
1.3	Run wbart . . . . .	3
1.4	Results returned with a list . . . . .	3
1.5	Assess Convegence with $\sigma$ Draws . . . . .	4
1.6	Look at in-sample Fit and Compare to a Linear Fit . . . . .	4
1.7	A Quick Look at the Uncertainty . . . . .	5
<b>2</b>	<b>Using predict.wbart</b>	<b>6</b>
2.1	Train and Test Data Sets . . . . .	6
2.2	Let's have a look at the predictions . . . . .	8

## 1 BART

BART is Bayesian Additive Regression Trees (see Chipman, George, and McCulloch).

We fit the basic model:

$$Y_i = f(x_i) + \epsilon_i, \quad \epsilon_i \sim N(0, \sigma^2)$$

We use Markov Chain Monte Carlo to get draws from the posterior distribution of the parameter  $(f, \sigma)$ .

In this vignette we look at BART::wbart which is the basic function in the R package **BART**.

---

### 1.1 Boston Housing Data

Let's just use the good old Boston housing data.

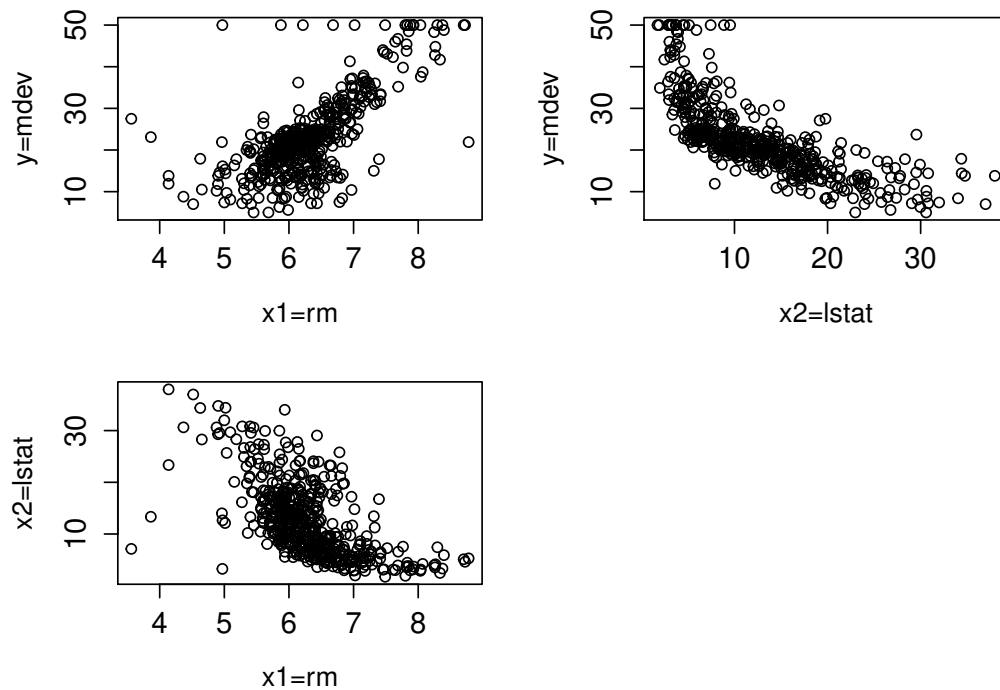
We'll predict the median house value,  $y$ =mdev, from  $x_1$  = rm (number of rooms) and  $x_2$ =lsat (% lower status).

```
library(MASS)
x = Boston[,c(6,13)] #rm=number of rooms and lstat= percent lower status
y = Boston$medv # median value
head(cbind(x,y))
```

```
##      rm lstat   y
## 1 6.575  4.98 24.0
## 2 6.421  9.14 21.6
## 3 7.185  4.03 34.7
## 4 6.998  2.94 33.4
## 5 7.147  5.33 36.2
## 6 6.430  5.21 28.7
```

## 1.2 A Quick Look at the Data

```
par(mfrow=c(2,2))
par(mai=c(.8,.8,.2,.2))
plot(x[,1],y,xlab="x1=rm",ylab="y=medv",cex.axis=1.3,cex.lab=1.2)
plot(x[,2],y,xlab="x2=lstat",ylab="y=medv",cex.axis=1.3,cex.lab=1.2)
plot(x[,1],x[,2],xlab="x1=rm",ylab="x2=lstat",cex.axis=1.3,cex.lab=1.2)
```



### 1.3 Run wbart

```
library(BART) #BART package
set.seed(99) #MCMC, so set the seed
nd=200 # number of kept draws
burn=50 # number of burn in draws
bf = wbart(x,y,nskip=burn,ndpost=nd)

## *****Into main of wbart
## *****Data:
## data:n,p,np: 506, 2, 0
## y1,yn: 1.467194, -10.632806
## x1,x[n*p]: 6.575000, 7.880000
## *****Number of Trees: 200
## *****Number of Cut Points: 100 ... 100
## *****burn and ndpost: 50, 200
## *****Prior:beta,alpha,tau,nu,lambd: 2.000000,0.950000,0.795495,3.000000,5.979017
## *****sigma: 5.540257
## *****w (weights): 1.000000 ... 1.000000
## *****Dirichlet:sparse,theta,omega,a,b,rho,augment: 0,0,1,0.5,1,2,0
## *****nkeeptrain,nkeeptest,nkeeptestme,nkeeptreedraws: 200,200,200,200
## *****printevery: 100
## *****skiptr,skipte,skipteme,skiptreedraws: 1,1,1,1
##
## MCMC
## done 0 (out of 250)
## done 100 (out of 250)
## done 200 (out of 250)
## time: 1s
## check counts
## trcnt,tecnt,temecnt,treedrawscnt: 200,0,0,200
```

---

### 1.4 Results returned with a list

We stored the results of running wbart in the list **bf**.

```
names(bf)
## [1] "sigma" "yhat.train.mean" "yhat.train"
## [4] "yhat.test.mean" "yhat.test" "varcount"
## [7] "varprob" "treedraws" "proc.time"
## [10] "mu" "varcount.mean" "varprob.mean"
## [13] "rm.const"
length(bf$sigma)
## [1] 250
length(bf$yhat.train.mean)
## [1] 506
dim(bf$yhat.train)
## [1] 200 506
```

*Remember*, the training data has  $n = 506$  observations, we had burn=50 burn-in draws and nd=200 kept draws.

Let's look at a couple key list components:

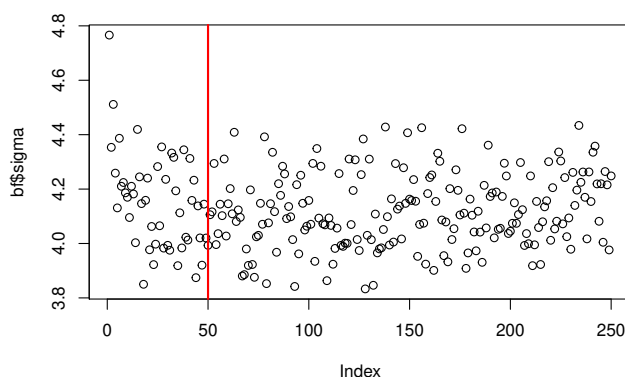
- **sigma**: burnin + kept (burn+nd) draws of  $\sigma$ .
  - **yhat.train.mean**:  $j^{th}$  value is posterior mean of  $f(x_j)$ ,  $f$  evaluated at the  $j^{th}$  training observation.
  - **yhat.train**:  $i, j$  value is the  $i^{th}$  kept MCMC draw of  $f(x_j)$ .
- 

## 1.5 Assess Convergence with $\sigma$ Draws

As with any high-dimensional MCMC, assessing convergence may be tricky.

A nice simple thing to look at is the draws of  $\sigma$ . The parameter  $\sigma$  is the only identified parameter in the model and it also gives us a sense of the size of the errors.

```
plot(bf$sigma)
abline(v=burn,lwd=2,col="red")
```



Look's like it burned in almost right away.

Just one initial draw looking a bit bigger than the rest. Hopefully, subsequent variation is legitimate posterior variation.

In a more difficult problem you may see the  $\sigma$  draws initially declining as the MCMC search for fit.

---

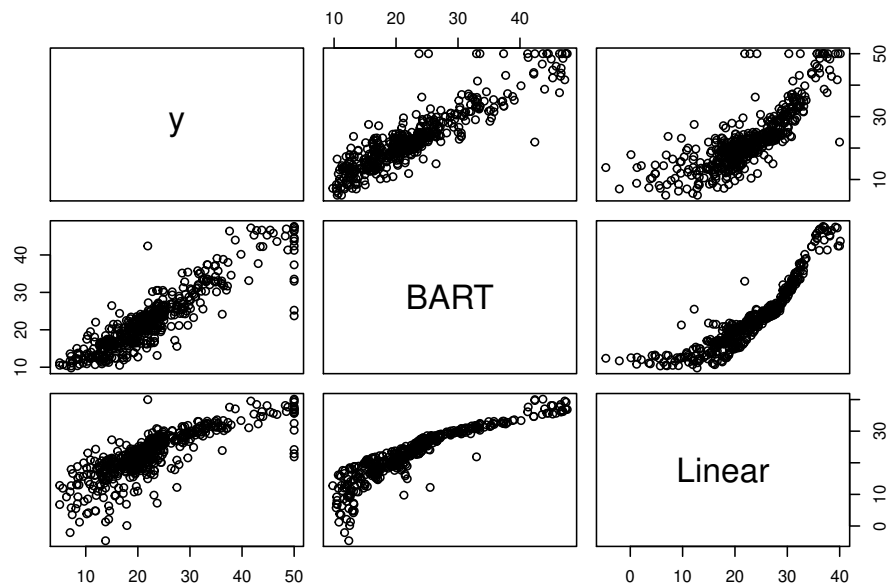
## 1.6 Look at in-sample Fit and Compare to a Linear Fit

Let's look at the in-sample BART fit (yhat.train.mean) and compare it to  $y=\text{medv}$  and the fits from a multiple linear regression.

```
lmf = lm(y~.,data.frame(x,y))
fitmat = cbind(y,bf$yhat.train.mean,lmf$fitted.values)
colnames(fitmat)=c("y","BART","Linear")
cor(fitmat)
```

```
##           y      BART    Linear
## y      1.0000000 0.9051200 0.7991005
## BART   0.9051200 1.0000000 0.8978003
## Linear 0.7991005 0.8978003 1.0000000
```

```
pairs(fitmat)
```

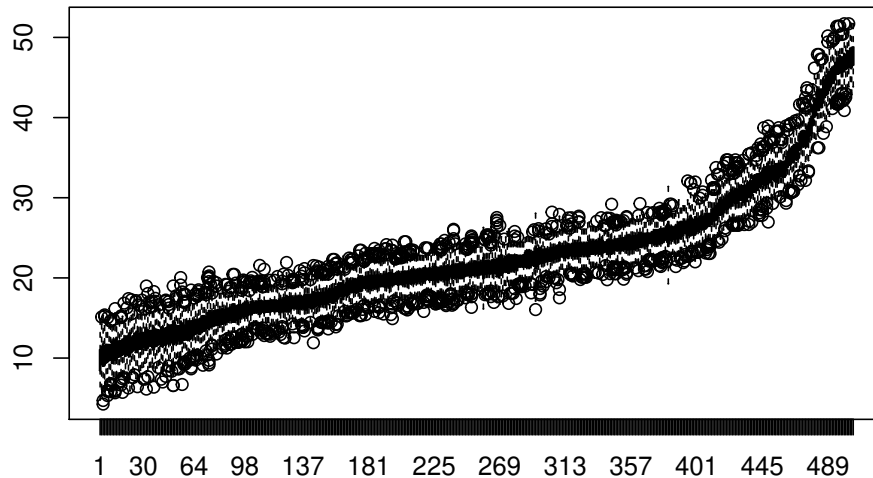


The BART fit is noticeably different from the linear fit.

## 1.7 A Quick Look at the Uncertainty

We order the observations by the fitted house value (`yhat.train.mean`) and then use boxplots to display the draws of  $f(x)$  in each column of `yhat.train`.

```
ii = order(bf$yhat.train.mean) #order observations by predicted value
boxplot(bf$yhat.train[,ii]) #boxplots of f(x) draws
```



Substantial predictive uncertainty, but you are still pretty sure some houses should cost more than others!!

## 2 Using predict.wbart

We can get out of sample predictions two ways.

First, we can just ask for them when we call `wbart` by supply a matrix of test  $x$  value.

Second, we can call a `predict` method.

---

### 2.1 Train and Test Data Sets

Let's split our data into train and test subsets.

```
n=length(y) #total sample size
set.seed(14) # Dave Keon, greatest Leaf of all time!
ii = sample(1:n,floor(.75*n)) # indices for train data, 75% of data
xtrain=x[ii,]; ytrain=y[ii] # training data
xtest=x[-ii,]; ytest=y[-ii] # test data
cat("train sample size is ",length(ytrain)," and test sample size is ",length(ytest),"\n")
```

```
## train sample size is 379 and test sample size is 127
```

And now we can run `wbart` using the train to learn and predict at `xtest`.

First, we'll just give `xtest` to the `wbart` call.

```
set.seed(99)
bfp1 = wbart(xtrain,ytrain,xtest) #predict.wbart wants a matrix
```

---

```
dim(bfp1$yhat.test)
## [1] 1000 127
length(bfp1$yhat.test.mean)
## [1] 127
```

Now

- **yhat.test**:  $i, j$  value is the  $i^{th}$  kept MCMC draw of  $f(x_j)$  where  $x_j$  is the  $j^{th}$  row of **xtest**.
- **yhat.test.mean**:  $j^{th}$  value is posterior mean of  $f(x_j)$ ,  $f$  evaluated at the  $j^{th}$  row of **xtest**.

---

Alternatively, we could run **wbart** saving all the MCMC results and then call **predict.wbart**.

```
set.seed(99)
bfp2 = wbart(xtrain,ytrain)
yhat = predict(bfp2,as.matrix(xtest)) #predict wants a matrix
```

Then **yhat** and **bfp1\$yhat.test** are the same.

```
dim(yhat)
## [1] 1000 127
summary(as.double(yhat-bfp1$yhat.test))
##      Min.      1st Qu.      Median      Mean      3rd Qu.      Max.
## -9.091e-09 -1.188e-09  2.455e-11  1.559e-12  1.186e-09  6.789e-09
```

*#Thining \*\*\**

In our simple Boston housing data set **wbart** runs pretty fast.

But with more data and longer runs you may want to speed things up by saving less and then using **predict**.

Let's just keep a thinned subset of 200 tree ensembles.

```
set.seed(4) #Bobby Orr, let's change the seed
bfthin = wbart(xtrain,ytrain,nskip=1000,ndpost=10000,
               nkeeptrain=0,nkeeptest=0,nkeeptestmean=0,nkeeptreedraws=200)
yhatthin = predict(bfthin,as.matrix(xtest)) #predict wants a matrix

dim(bfthin$yhat.train)
## [1] 0 379
dim(yhatthin)
## [1] 200 127
```

Now there are no kept draws of  $f(x)$  for training  $x$ , and we have 200 tree ensembles to use in **predict.wbart**.

---

*##The thinning arguments:*

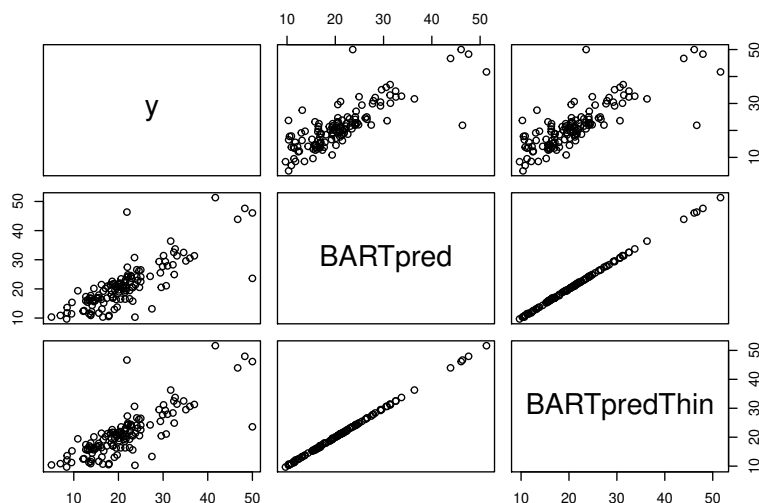
- **nkeeptrain** : number of  $f(x)$  draws to save for training  $x$ .
- **nkeptest** : number of  $f(x)$  draws to save for test  $x$ .
- **nkeptestmeam** : number of draws to use in computing `yhat.test.mean`.
- **nkeptreedraws** : number of tree ensembles to keep.

The default values are to keep all the draws (e.g. `nkeeptrain=ndpost`).

Of course, if you keep 100 out of 100,000, you keep every 1,000th draw.

## 2.2 Let's have a look at the predictions

```
fmat=cbind(ytest,bfp1$yhat.test.mean,apply(yhatthin,2,mean))
colnames(fmat) = c("y","BARTpred","BARTpredThin")
pairs(fmat)
```



*Recall*, the **BARTpred** predictions are from a run are from a BART run with `seed=99` and all default values.

The **BARTpredThin** are from 200 kept trees out of a long run with 1,000 burn-in and 10,000 kept draws and `seed=4`.

*Interesting how similar they are !!!!*