

Composite Endpoint Analysis Report

Missing Data Matters

2016-07-04

Contents

Data Summary	2
Analysis Summary	2
Missingness Summary	3
Survival	3
Imputation Result	4
Imputed Outcomes	4
Imputed Endpoint	5
Composite Quantile	5
Bootstrap Results	6
Hypothesis Testing	6
Median	6

Data Summary

```
##          AGE          TRT          SURV          Y2
## Min.      :18.06   Min.      :0.0000   Min.      :  1.0   Min.      :17.00
## 1st Qu.:55.52   1st Qu.:0.0000   1st Qu.: 14.5   1st Qu.:37.00
## Median :66.23   Median :0.0000   Median :365.0   Median :41.00
## Mean    :63.72   Mean    :0.4973   Mean    :519.5   Mean    :40.86
## 3rd Qu.:75.39   3rd Qu.:1.0000   3rd Qu.:999.0   3rd Qu.:47.00
## Max.    :90.29   Max.    :1.0000   Max.    :999.0   Max.    :53.00
##                                     NA's      :136
##
##          Y1
## Min.      :12.0
## 1st Qu.:35.0
## Median :39.5
## Mean    :38.7
## 3rd Qu.:45.0
## Max.    :54.0
## NA's     :111
```

Analysis Summary

The basic settings of the analysis are as follows:

```
## $endfml
## [1] "Y2"
##
## $duration
## [1] 365
##
## $bounds
## [1]  0 100
##
## $mindiff
## [1] 0 0
##
## $trt
## [1] "TRT"
##
## $surv
## [1] "SURV"
##
## $outcome
## [1] "Y1" "Y2"
##
## $y0
## NULL
##
## $cov
## [1] "AGE"
##
## $endp
## [1] "Y2"
```

```
##
## $unitTime
## [1] "Days"
##
## $parsed.endfml
## expression(with(d.frame, { Y2 })))
```

The imputation and bootstrap analysis settings are

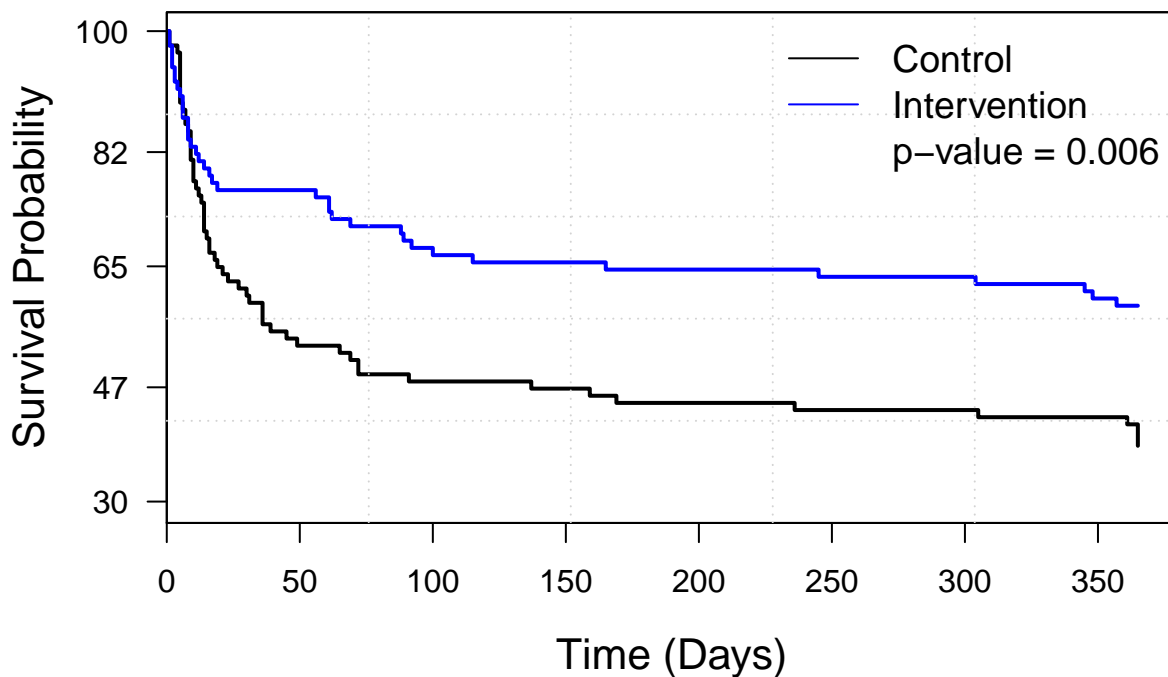
- Iterations: 100
- Thinning: 1
- Scale of random walk MH: 1

Missingness Summary

	Y1	Y2	Control	Intervention
Deaths on study			58 (62%)	38 (41%)
S=1	Observed	Observed	18 (19%)	32 (34%)
S=2	Observed	Missing	8 (9%)	8 (9%)
S=3	Missing	Observed	1 (1%)	0 (0%)
S=4	Missing	Missing	9 (10%)	15 (16%)
Total			94	93

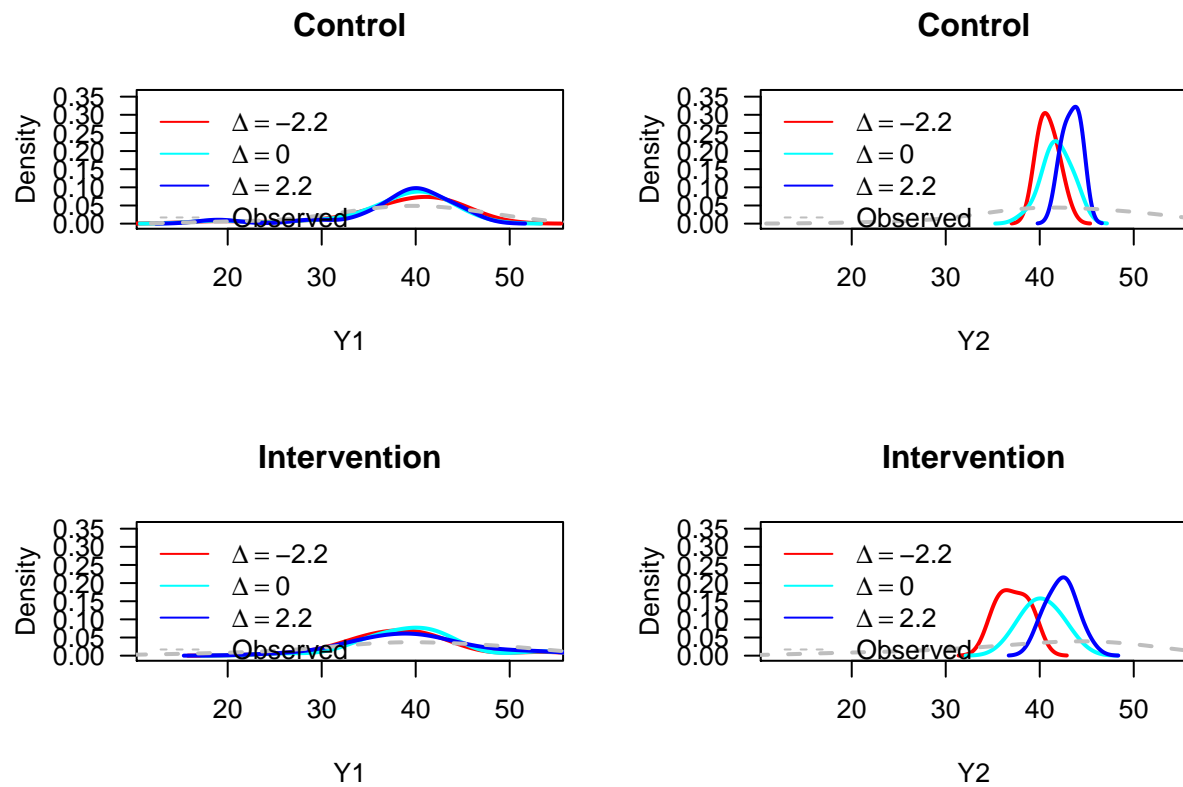
Survival

Survival Curves

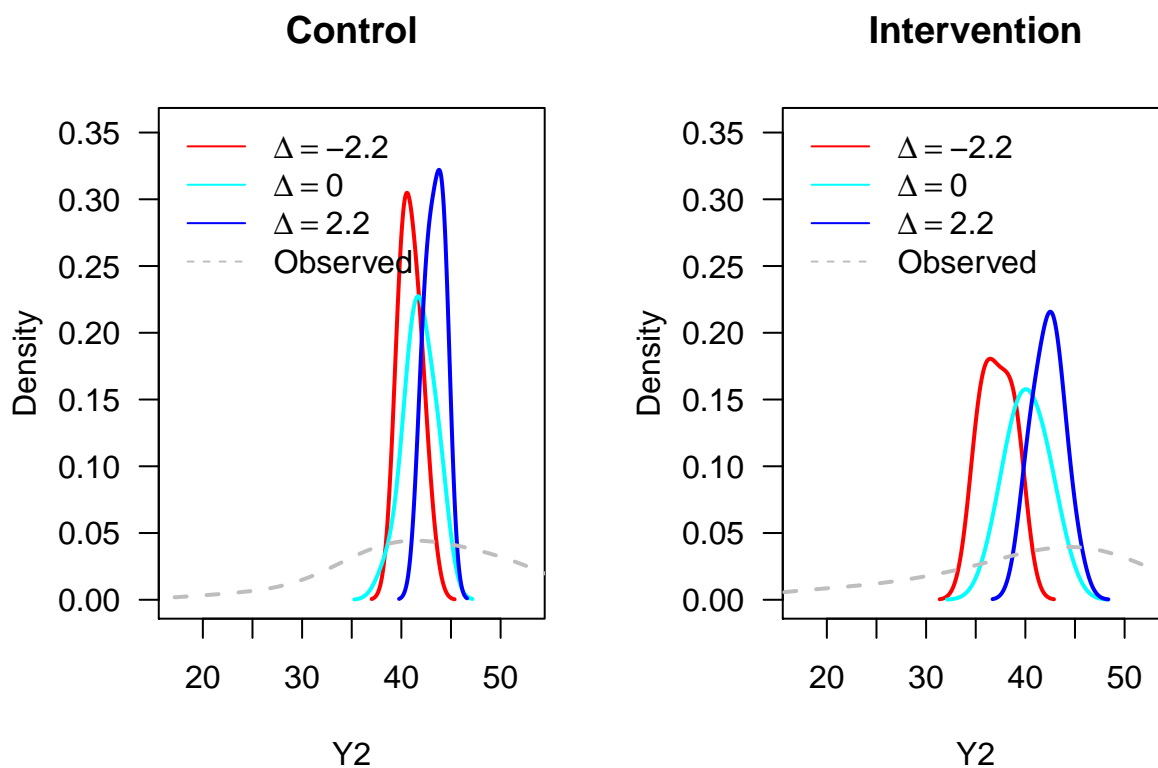


Imputation Result

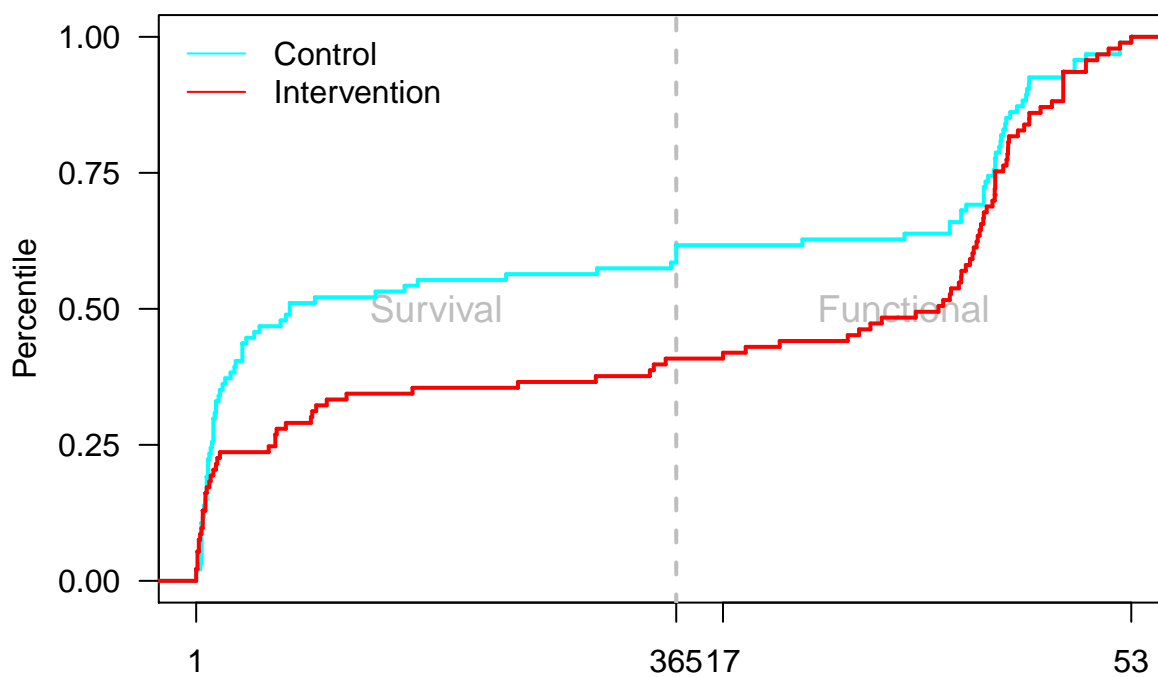
Imputed Outcomes



Imputed Endpoint



Composite Quantile



Bootstrap Results

Hypothesis Testing

	Delta0	Delta1	Theta	SD	PValue
1	-2.20	-2.20	-0.12	0.11	0.26
2	0.00	-2.20	-0.12	0.11	0.27
3	2.20	-2.20	-0.11	0.10	0.26
4	-2.20	0.00	-0.18	0.11	0.10
5	0.00	0.00	-0.16	0.11	0.13
6	2.20	0.00	-0.14	0.10	0.16
7	-2.20	2.20	-0.23	0.10	0.02
8	0.00	2.20	-0.20	0.10	0.04
9	2.20	2.20	-0.17	0.10	0.09

Median

	Delta	TRT	Q	Quant	LB	UB
1	-2.20	0.00	0.25	-1.00	-0.32	-0.03
2	-2.20	0.00	0.50	-1.00	-0.30	-0.02
3	-2.20	0.00	0.75	40.09	-0.26	-0.01
4	-2.20	1.00	0.25	-1.00	-0.34	-0.07
5	-2.20	1.00	0.50	34.74	-0.33	-0.05
6	-2.20	1.00	0.75	39.01	-0.29	-0.04
7	0.00	0.00	0.25	-1.00	-0.36	-0.12
8	0.00	0.00	0.50	-1.00	-0.35	-0.10
9	0.00	0.00	0.75	40.87	-0.34	-0.09
10	0.00	1.00	0.25	-1.00	-0.32	-0.03
11	0.00	1.00	0.50	36.00	-0.30	-0.02
12	0.00	1.00	0.75	41.00	-0.26	-0.01
13	2.20	0.00	0.25	-1.00	-0.34	-0.07
14	2.20	0.00	0.50	-1.00	-0.33	-0.05
15	2.20	0.00	0.75	41.99	-0.29	-0.04
16	2.20	1.00	0.25	-1.00	-0.36	-0.12
17	2.20	1.00	0.50	36.00	-0.35	-0.10
18	2.20	1.00	0.75	42.74	-0.34	-0.09